



THE
CONTINUUM

Where everything begins
with endless possibilities

A fluid expression of rich diversity
and modern luxury awaits.



“A dialogue of comfort and splendour between two parallel plots, the Continuum Bridge brings across seamless living through all of life’s ultimate escapades.”

— KINGSLEY NG, DIRECTOR
P&T ARCHITECTS

Dreams you wish would
last forever, do.



The Continuum makes this possible by perfecting the
finest details, in a home where space meets timelessness.





Build your everlasting legacy on the
largest freehold plot in the East.



One exclusive address, two majestic sites,
a myriad of lifestyles. Eternally yours.



ARTIST'S IMPRESSION

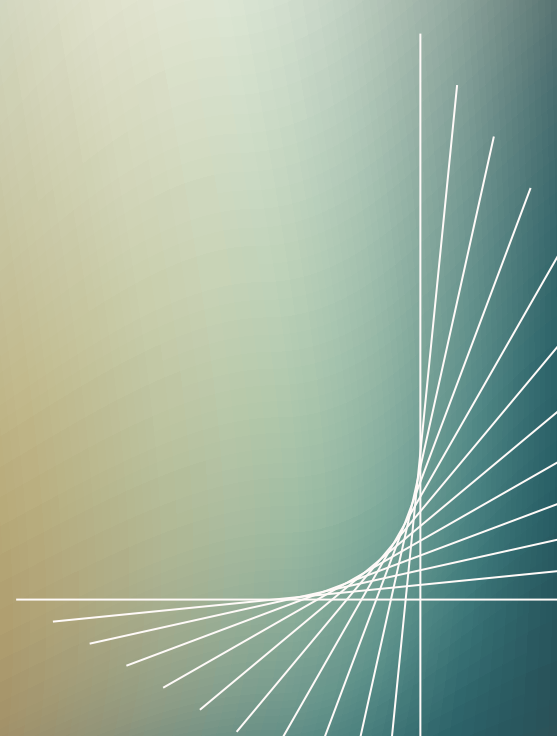
Nestled in a cultural oasis on the edge of the city,
a special place in the heart of life.





Neighbouring Amenities

YOUR EVOLVING, ECLECTIC NEIGHBOURHOOD



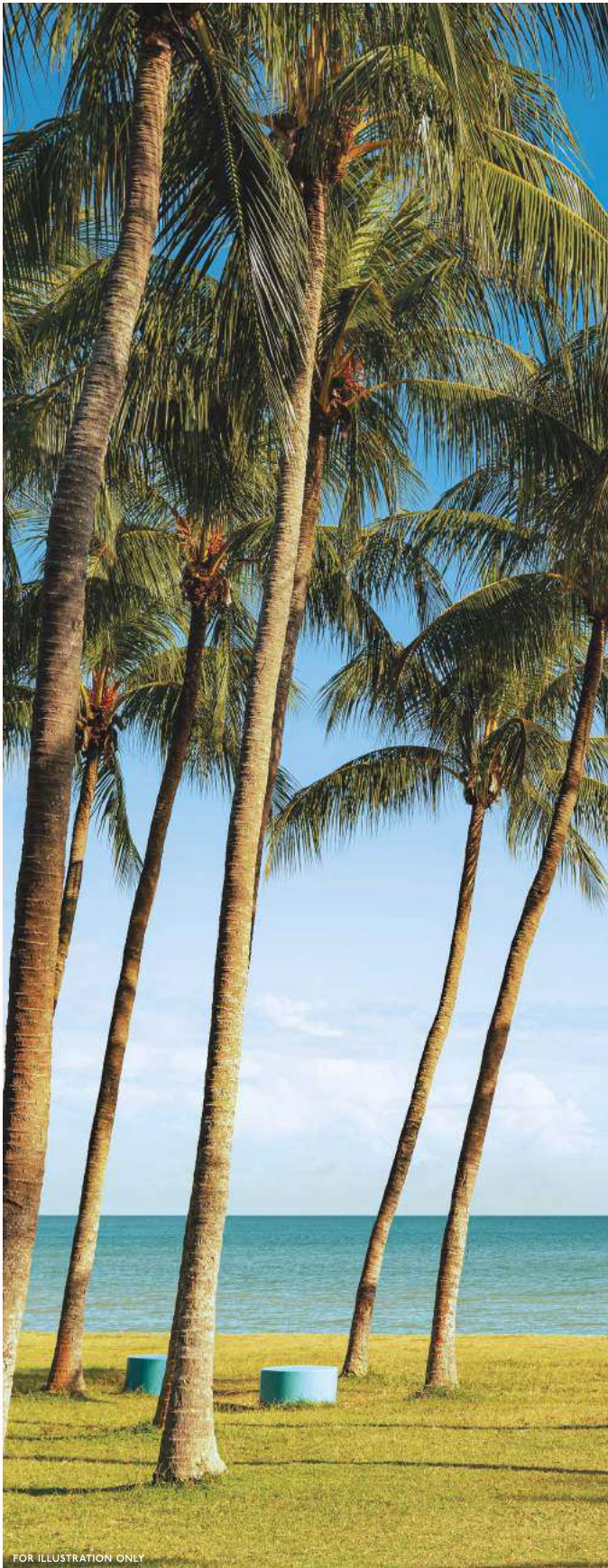
Wander a backyard that spans nature, culture and the city

Minutes away from the city and surrounded by the excitements of Katong, East Coast and Paya Lebar, The Continuum captures the imagination of those who want it all. From this prime location, flow seamlessly through your passions and aspirations, with time to appreciate the moments in between.

East Coast

FAVOURITE PASTIMES IN AN OCEAN OF TRANQUILITY

Embracing the sea from Changi to Marina Bay, East Coast is Singapore's largest park that offers a unique recreational experience.



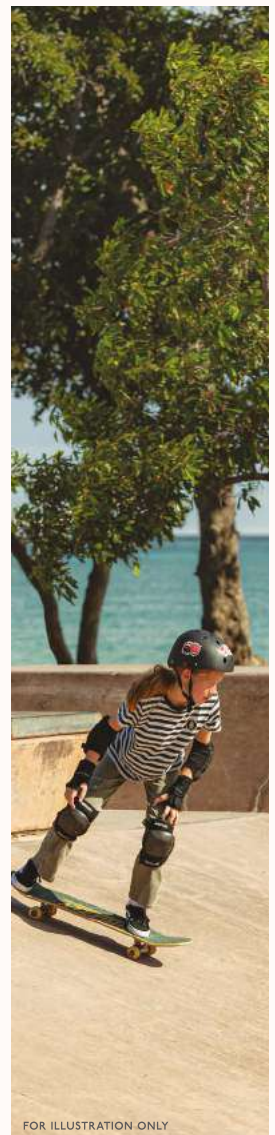
FOR ILLUSTRATION ONLY

EAST COAST PARK



FOR ILLUSTRATION ONLY

COASTAL PLAYGROVE



FOR ILLUSTRATION ONLY

XTREME SKATEPARK

Katong

OLD-WORLD CHARM GLITTERING WITH TRENDY HANGOUTS

Alive with Peranakan culture, Katong is a wondrous mosaic of chic boutiques, quaint cafes and buzzy pubs set in heritage shophouses.



FOR ILLUSTRATION ONLY

PERANAKAN HOUSES



FOR ILLUSTRATION ONLY

NEPTUNE CAFÉ

Paya Lebar / Kallang

WELL-CONNECTED MULTIFACETED HUB

This lifestyle central surrounded by business and residential hubs is quickly becoming a social enclave with a multitude of dining, retail, and enrichment offerings.



FOR ILLUSTRATION ONLY

PAYA LEBAR QUARTER

PHOTO CREDIT: LENDLEASE SINGAPORE



FOR ILLUSTRATION ONLY

NATIONAL STADIUM



ION ORCHARD

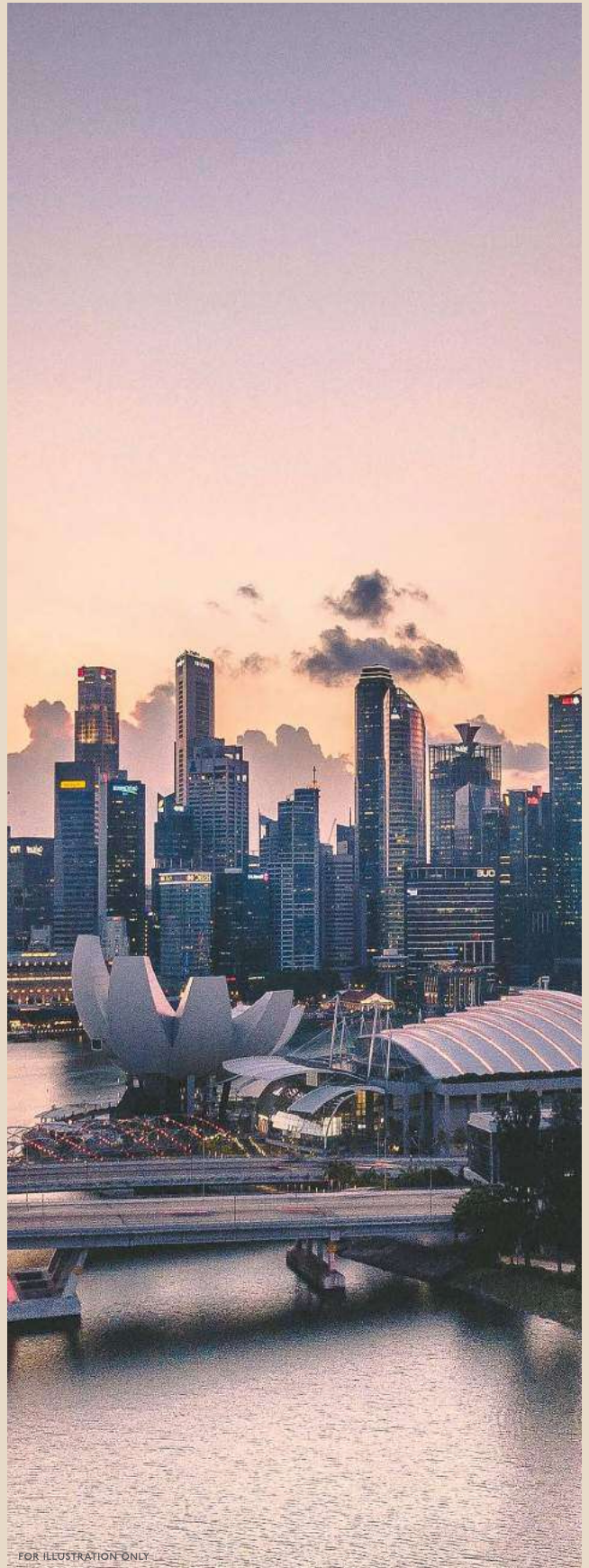


GARDENS BY THE BAY

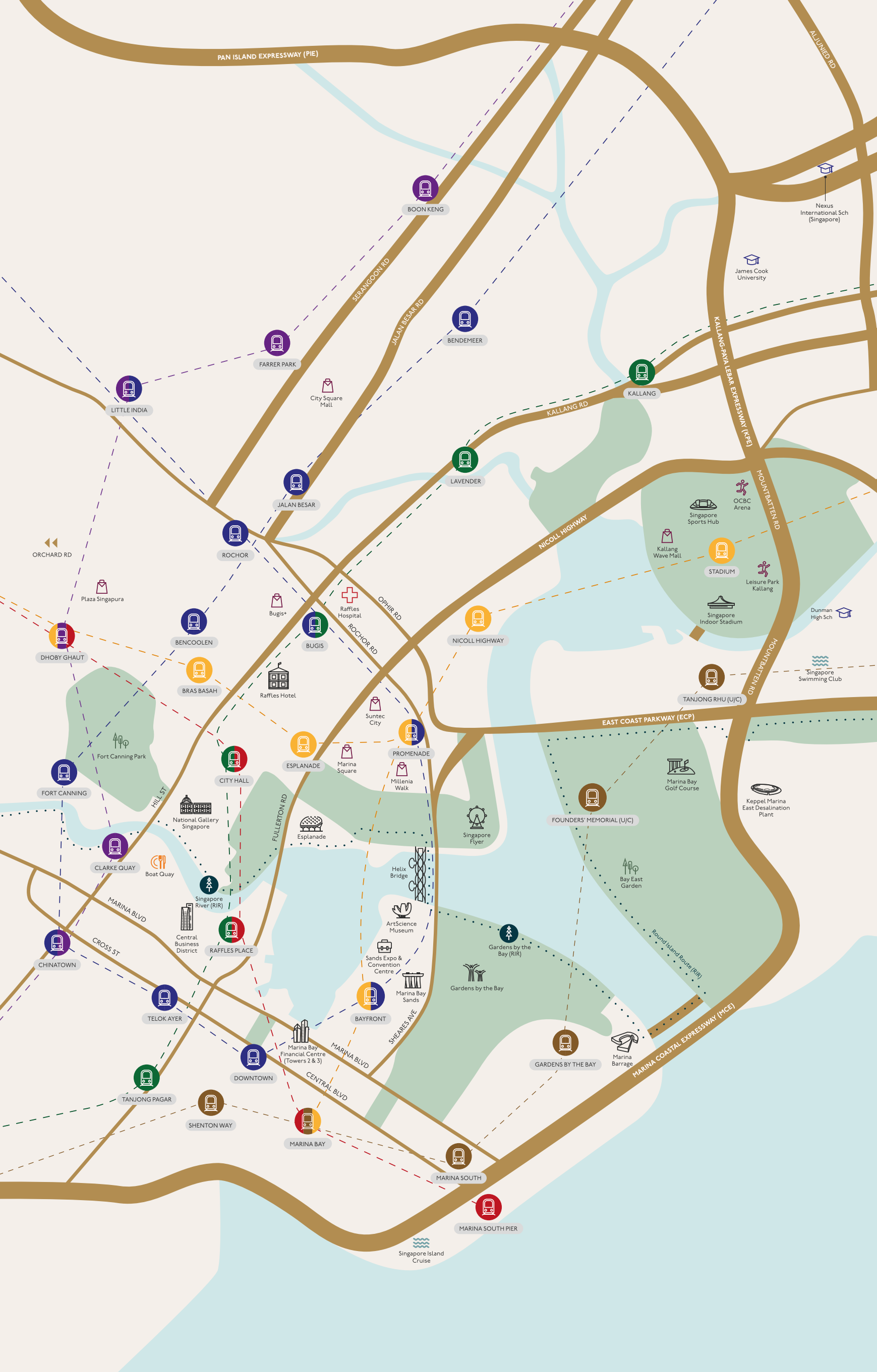
City

WORLD-CLASS BUSINESS AND PLEASURES

The Central Business District and Orchard belt are just minutes away from home, affording you time to relax and rejuvenate for work and play.



MARINA BAY DISTRICT



PAN ISLAND EXPRESSWAY (PIE)

ALJUNIED RD

BOON KENG

Nexus International Sch (Singapore)

James Cook University

BENDEMEER

FARRER PARK

City Square Mall

KALLANG

LITTLE INDIA

KALLANG RD

KALLANG-PAN LAHAR EXPRESSWAY (KPE)

LAVENDER

JALAN BESAR

NICOLL HIGHWAY

MOUNTBATTEN RD

ROCHOR

Singapore Sports Hub
OCBC Arena
Singapore Sports Hub
Kallang Wave Mall
STADIUM
Leisure Park Kallang
Singapore Indoor Stadium
Dunman High Sch

ORCHARD RD

Plaza Singapura

JALAN BESAR

BUGIS

Raffles Hospital

NICOLL HIGHWAY

Dunman High Sch

BENCOOLEN

BUGIS

Raffles Hotel

DHOBY GHAUT

BRAS BASAH

ESPLANADE

Suntec City

EAST COAST PARKWAY (ECP)

Singapore Swimming Club

Plaza Singapura

BENCOOLEN

BUGIS

Raffles Hotel

FORT CANNING

CITY HALL

ESPLANADE

Marina Square

PROMENADE

TANJONG RHU (U/C)

FORT CANNING

CITY HALL

ESPLANADE

Marina Square

PROMENADE

FOUNDERS' MEMORIAL (U/C)

Keppel Marina East Desalination Plant

FORT CANNING

FORT CANNING

CITY HALL

ESPLANADE

Marina Square

PROMENADE

Marina Bay Golf Course

CLARKE QUAY

CITY HALL

ESPLANADE

Marina Square

PROMENADE

FOUNDERS' MEMORIAL (U/C)

Bay East Garden

CLARKE QUAY

CITY HALL

ESPLANADE

Marina Square

PROMENADE

Marina Bay Golf Course

CHINATOWN

CITY HALL

ESPLANADE

Marina Square

PROMENADE

FOUNDERS' MEMORIAL (U/C)

Bay East Garden

CHINATOWN

CITY HALL

ESPLANADE

Marina Square

PROMENADE

FOUNDERS' MEMORIAL (U/C)

Bay East Garden

TELOK AYER

CITY HALL

ESPLANADE

Marina Square

PROMENADE

FOUNDERS' MEMORIAL (U/C)

Bay East Garden

TANJONG PAGAR

CITY HALL

ESPLANADE

Marina Square

PROMENADE

FOUNDERS' MEMORIAL (U/C)

Bay East Garden

SHENTON WAY

CITY HALL

ESPLANADE

Marina Square

PROMENADE

FOUNDERS' MEMORIAL (U/C)

Bay East Garden

MARINA BAY

CITY HALL

ESPLANADE

Marina Square

PROMENADE

FOUNDERS' MEMORIAL (U/C)

Bay East Garden

MARINA SOUTH

CITY HALL

ESPLANADE

Marina Square

PROMENADE

FOUNDERS' MEMORIAL (U/C)

Bay East Garden

MARINA SOUTH PIER

CITY HALL

ESPLANADE

Marina Square

PROMENADE

FOUNDERS' MEMORIAL (U/C)

Bay East Garden

Singapore Island Cruise

MARINA COASTAL EXPRESSWAY (MCE)

CHINATOWN

CITY HALL

ESPLANADE

Marina Square

PROMENADE

FOUNDERS' MEMORIAL (U/C)

Bay East Garden

TELOK AYER

CITY HALL

ESPLANADE

Marina Square

PROMENADE

FOUNDERS' MEMORIAL (U/C)

Bay East Garden

TANJONG PAGAR

CITY HALL

ESPLANADE

Marina Square

PROMENADE

FOUNDERS' MEMORIAL (U/C)

Bay East Garden

SHENTON WAY

CITY HALL

ESPLANADE

Marina Square

PROMENADE

FOUNDERS' MEMORIAL (U/C)

Bay East Garden

MARINA BAY

CITY HALL

ESPLANADE

Marina Square

PROMENADE

FOUNDERS' MEMORIAL (U/C)

Bay East Garden

MARINA SOUTH

CITY HALL

ESPLANADE

Marina Square

PROMENADE

FOUNDERS' MEMORIAL (U/C)

Bay East Garden

MARINA SOUTH PIER

CITY HALL

ESPLANADE

Marina Square

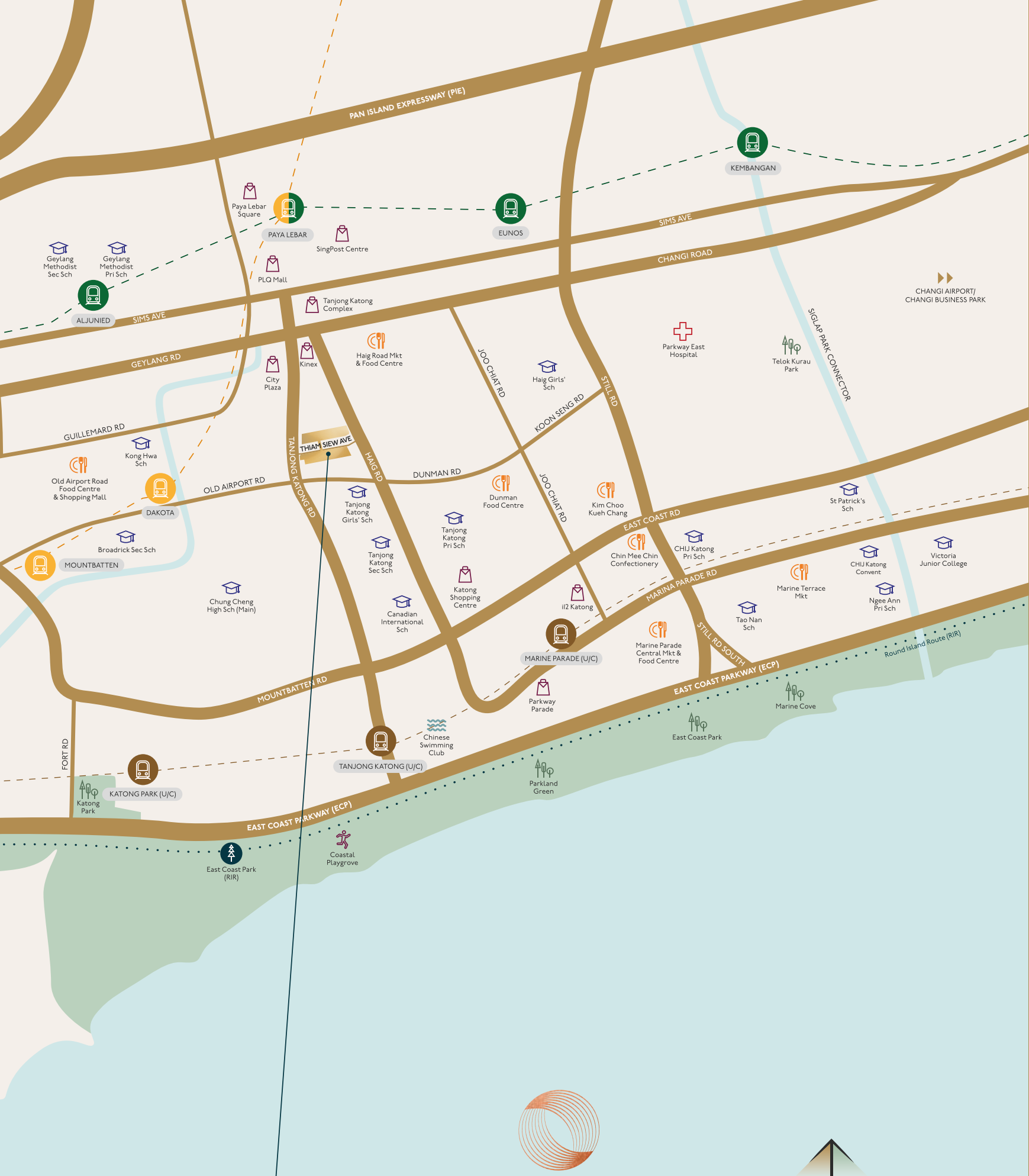
PROMENADE

FOUNDERS' MEMORIAL (U/C)

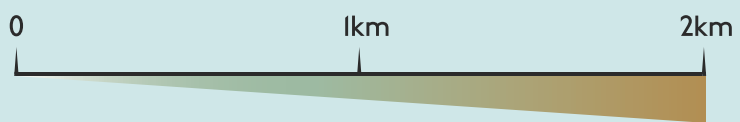
Bay East Garden

Singapore Island Cruise

MARINA COASTAL EXPRESSWAY (MCE)



THE
CONTINUUM



FOR ILLUSTRATION ONLY

At the centre of your world, The Continuum revolves around you



FOR ILLUSTRATION ONLY

EXCELLENCE AT EVERY LEVEL

From Tao Nan School to Victoria Junior College, a quality education pathway is right around the corner.



FOR ILLUSTRATION ONLY

EASY ACCESS TO CBD

Proximity to the Central Business District earns you more time for the things that matter most.



FOR ILLUSTRATION ONLY

A SPREAD OF NOSTALGIA

Traditional culinary artistry lives on in Chin Mee Chin Confectionery, Guan Hoe Soon Restaurant and more.



FOR ILLUSTRATION ONLY

BRIMMING WITH CAFÉ CULTURE

Gems like the fashionable Neptune Café are another delicious way to enjoy the neighbourhood.



FOR ILLUSTRATION ONLY

ADVENTURES ON THE SEA

Between PAssion WaVe @ East Coast and Kallang Water Sports Centre are endless hours of watercraft fun.



FOR ILLUSTRATION ONLY

WEEKEND ESCAPES ON THE SHORE

Some of the most scenic picnic and kiting spots in the land, from East Coast Park to the Marina Barrage.



FOR ILLUSTRATION ONLY

EVERYDAY SHOPPING

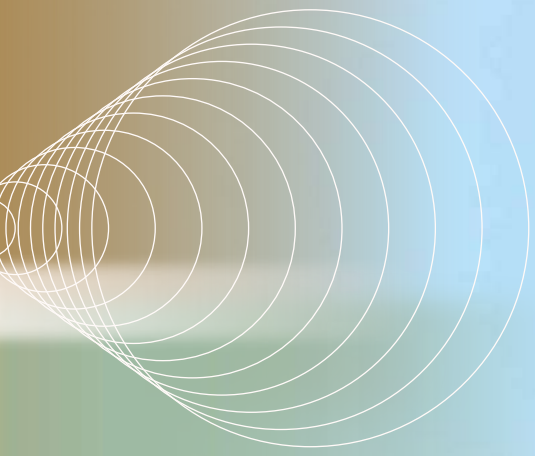
Get all your essentials at il2 Katong and Parkway Parade, a mall that resides in east-siders' hearts.



FOR ILLUSTRATION ONLY

NICHE CHIC

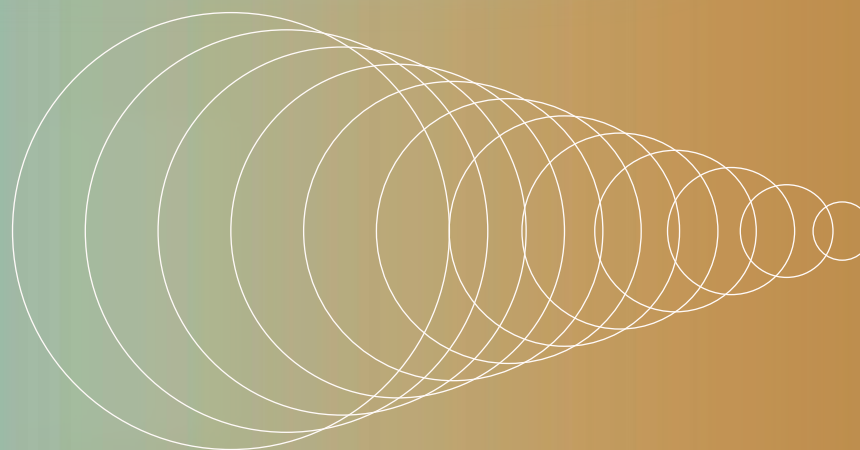
Joo Chiat's rebirth as a boutique district features rising star SOJAO alongside a range of specialty stores.



ARTIST'S IMPRESSION

Property Facilities

URBAN LIVING, REDEFINED



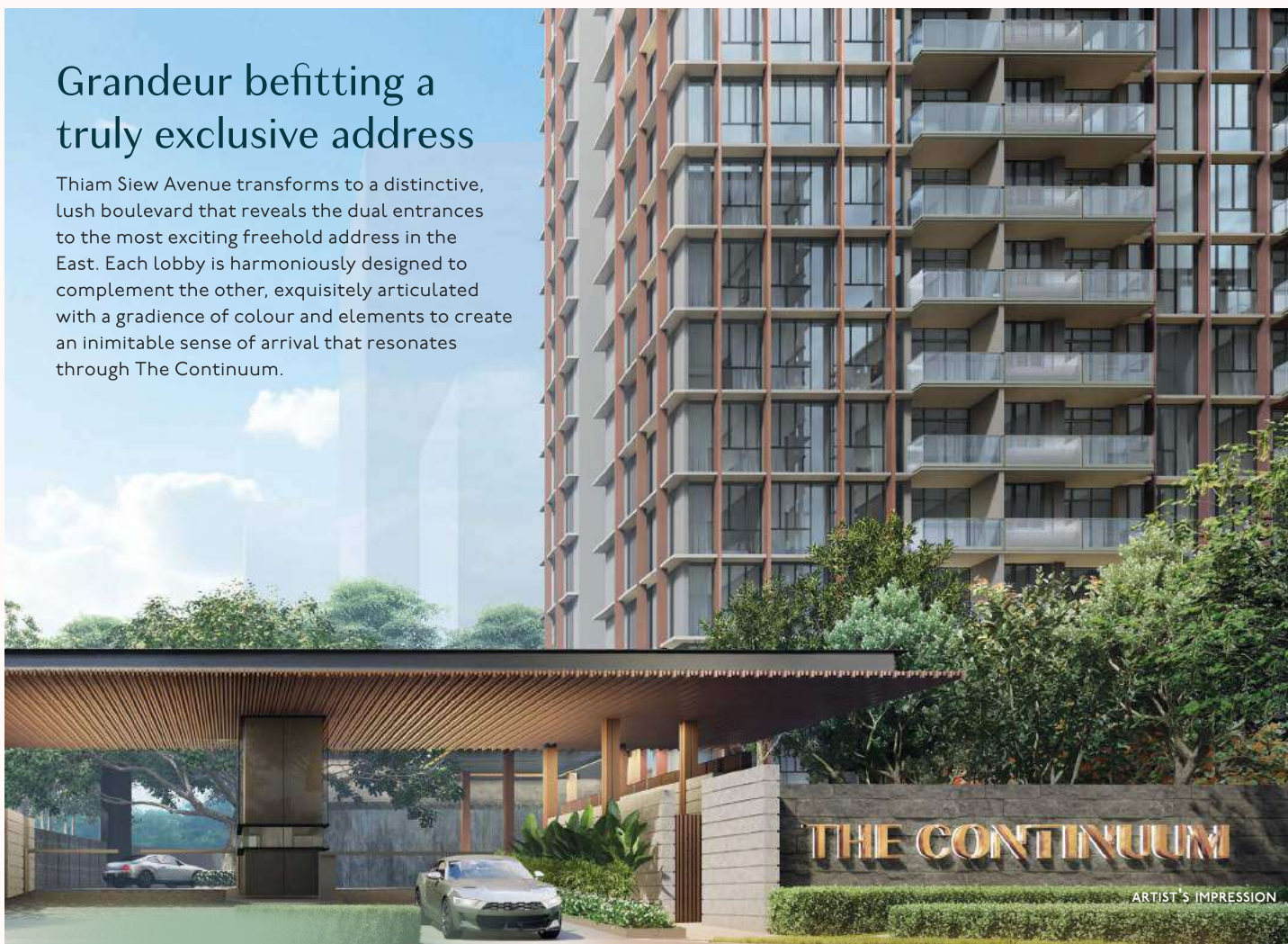
Meticulously symbolic, resolutely unmistakable

Two stunning silhouettes in an artful weave of luxury and comfort stretch parallel within the intricate enclave. The iconic Continuum Bridge, a unique modernist sculptural centrepiece, is where tastes and textures converge, connecting you with the other dimensions of this thoughtfully designed development. Meanwhile, high above the populace, two skyways that dazzle the night link breathtakingly curated Sky Gardens. Framed by sublime ocean and city views are class venues tailored for a range of leisure pursuits. An escape within a dream home where personal bests are achieved and social circles flourish.



Grandeur befitting a truly exclusive address

Thiam Siew Avenue transforms to a distinctive, lush boulevard that reveals the dual entrances to the most exciting freehold address in the East. Each lobby is harmoniously designed to complement the other, exquisitely articulated with a gradience of colour and elements to create an inimitable sense of arrival that resonates through The Continuum.



ARTIST'S IMPRESSION

NORTH ENTRANCE



ARTIST'S IMPRESSION

SOUTH ENTRANCE

An undivided attention to detail

Complete amenities are meticulously curated and mapped with all generations and aspirations in mind. The Continuum promises continuity of well-being for the mind and body, heart and soul.

THIAM SIEW HOUSE



Timeless memories await at the refurbished Thiam Siew House. The clubhouse features a decorative wall that preserves the property's Marseille roof tiles, a mid-19th century innovation,

and original wooden casement windows restored from another house. The gate posts remain as they were, heralding memorable moments as they have done for decades.



LIBRARY

Catch up on your thoughts in the quietest place around, which has the makings of a refreshing remote work environment.



CLUB ROOM

Designed to charm and furnished for comfort, with ample room to celebrate all occasions from baby's full month to landmark birthdays.

From the refurbished heritage bungalow north clubhouse to the ultra-contemporary south clubhouse. Find your social sweet spot anywhere along the spectrum of choices at The Continuum.

SOUTH SIDE SOCIAL



Entertain or be entertained at South Side Social. Inspired by a glowing lantern, it brings a radiant dimension to the plethora of indoor experiences at The Continuum. In ambient contrast to

Thiam Siew House, The Continuum's second clubhouse picks up the tempo with two floors of merriment in three diverse spaces designed to indulge playful imaginations.



SOUND ROOM

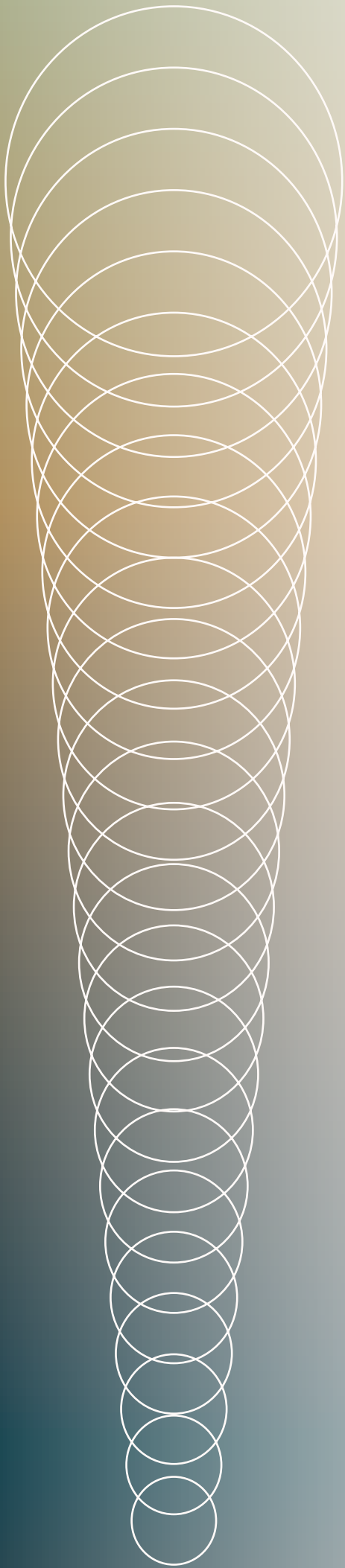
K-pop group nights, family singalongs or anytime you feel like breaking into song. Hours are always happy here.



GLASS HOUSE

Calming palettes create a warm ambience that complements tea parties as much as it inspires art workshops.

Sky



Ground

Elevated living from the ground up

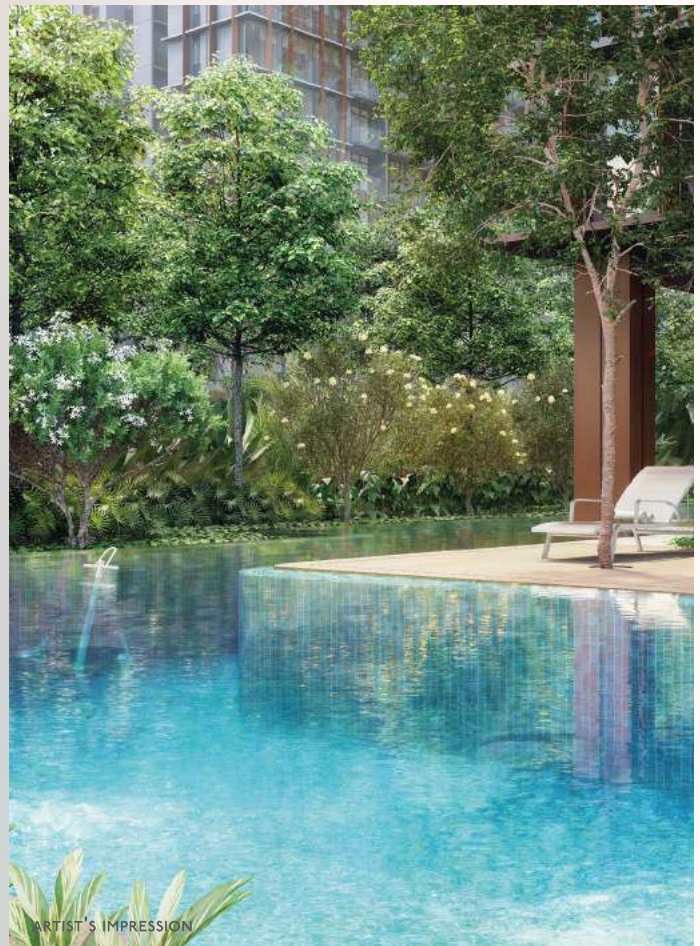
Rejuvenation



ARTIST'S IMPRESSION

HAMMOCK DECK

Drift on a daydream or stargaze a romantic evening away as you sway gently in the breeze amid a verdant Sky Garden.



ARTIST'S IMPRESSION

AQUA GYM POOL

From low-impact exercise to resistance training, aqua bikes and other equipment offer a refreshing workout for all fitness levels.

Lavishly detailed from the lush landscaped grounds up to breathtaking heights, The Continuum is poised to turn moments into lasting memories.

Radiance



SKY JACUZZI

Relax in style high above the bustle as sweeping views of the coast or city skyline melt your worries away.

Celebration



SKY ROOF NORTH

Gather with friends new and old at this welcoming extension of your living room, or simply lean back and enjoy the view.



POOL PAVILION NORTH

Lap pools on either plot complement play and wellness pools to cater for serious swimming or fun family time.



PLAYGROUND NORTH

Themed playgrounds woven into the landscape combine art and adventure for your kids to create new dimensions of play.

Enjoy the greater indoors

North Plot



ARTIST'S IMPRESSION

SKY BAR

This plush, inviting space is the perfect setting for romantic sunsets or intimate gatherings.



ARTIST'S IMPRESSION

SKY FITNESS

Recharge your mind and body with a range of state-of-the-art equipment set amid spectacular views.

South Plot



ARTIST'S IMPRESSION

SKY CLUB

Take your guests' breath away with your culinary skills and panoramic views in this finely appointed private dining destination.



ARTIST'S IMPRESSION

SKY GYM

Overlooking scenic serenity, yoga and pilates zones let you achieve holistic wellness at your own time and tempo.

North



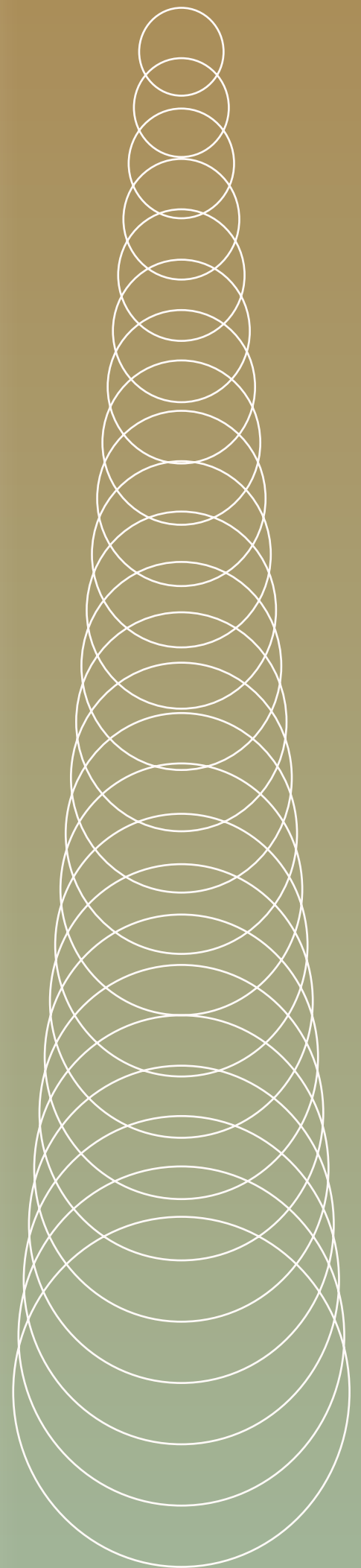
GRILL DECK & RESTING LOUNGE

Grill and chill at the rooftop barbeque area that comes with a well-furnished, air-conditioned dining room.



SOCIAL ROOM

This flexible, spacious hall can be easily configured for a range of activities, from movie nights to ballroom dancing.



South

Overall Landscape Plan & Facilities



North Continuum

A ARRIVAL ZONE NORTH

- A1 Waterwall Drop-Off Plaza
 - A2 Waterwall
 - A3 Bicycle Parking
- ### B PLAY ZONE NORTH
- B1 Playground North
 - B2 Playground Deck
- ### F GARDEN ZONE NORTH
- F1 Lobby Garden
 - F2 Patterned Garden
 - F3 Reflexology Garden

C WELLNESS ZONE

- C1 Lap Pool (33.3m Lap length x 7m lap width, 1.2m water depth) (approx. 270m² incl. Jacuzzi Cove)
 - C2 Jacuzzi Cove (0.9m water depth)
 - C3 Pool Deck
 - C4 BBQ Pavilion
 - C5 Resting Pavilion
 - C6 Changing Room
 - C7 Accessible Toilet
 - C8 Outdoor Shower
- ### G CONTINUUM BRIDGE
- G1 Resting Pod
 - G2 Bridge

D HERITAGE ZONE

- D1 Thiam Siew House
- D1.1 Library
- D1.2 Club Room
- D1.3 Foyer
- D2 Thiam Siew House Front Court
- D3 Front Court Lawn
- D4 Water Bowl
- D5 Roof Tiles Feature Wall
- D6 BBQ Pavilion
- D7 Accessible Toilet

E FITNESS ZONE

- E1 Multipurpose Lawn
- E2 Leisure Pool Deck
- E3 Leisure Pool (1.2m water depth) (approx. 244m² incl. Aqua Gym Pool & Jacuzzi Cove)
- E4 Aqua Gym Pool (1.2m water depth)
- E5 Jacuzzi Cove (0.9m water depth)
- E6 Aqua Gym Pool Deck
- E7 Outdoor Shower
- E8 Outdoor Gym
- E9 Yoga Lawn

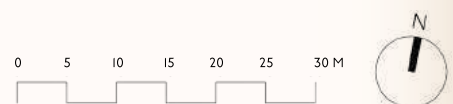
“The evolution of Tanjong Katong from an organic coastal area to a residential suburb inspired the transformation of landforms from south to north, from naturalistic to stylised to geometric. In juxtaposition, a geometric weave pattern based on a stylised Peranakan tile radiates from the conserved house to its surroundings, accentuating the historical links to its Peranakan roots.”

— HELEN SMITH-YEO, LANDSCAPE ARCHITECT



South
Continuum

South Continuum



BP APPROVAL NO.: A1716-00010-2021-BP01 DATED 24 MARCH 2023
ARTIST'S IMPRESSION

- | | | | |
|--|--|---|---|
| <ul style="list-style-type: none"> H ARRIVAL ZONE SOUTH H1 Droplet Drop-Off Plaza H2 Droplet Pool H3 Bicycle Parking L PLAY ZONE SOUTH L1 Playground South L2 Water Play L3 Outdoor Shower L4 Lawn Steps L5 BBQ Pavilion L6 Multipurpose Recreational Court M GARDEN ZONE SOUTH M1 Sensory Garden M2 Lawn Garden M3 Reflexology Garden | <ul style="list-style-type: none"> J "RIVER" POOL ZONE J1 Cascading Children's & Toddler's Pool (0.5m & 0.3m water depth) (approx. 98m²) J2 Children's Pool Deck J3 Outdoor Shower J4 Resting Pavilion J5 Lawn Deck J6 Family Pool (0.9m water depth) (approx. 149m² incl. Wellness Pool) J7 Wellness Pool (0.9m water depth) <ul style="list-style-type: none"> J7.1 Swan Neck Cove J7.2 Hydrotherapy Pocket J7.3 Vichy Shower Beds J8 Lounge Deck J9 Resting Pavilion J10 Changing Room J11 Accessible Toilet | <ul style="list-style-type: none"> K "LAKE" POOL ZONE K1 50m Lap Pool (50m lap length x 5.5m lap width, 25m lap length x 3.0m lap width, 1.2m water depth) (approx. 543m² excl. Wellness Pool & Family Pool) K2 Pool Deck K3 Clubhouse Deck K4 Outdoor Shower K5 South Side Social <ul style="list-style-type: none"> K5.1 Glass House (1st Storey) K5.2 Sound Room (1st Storey) K5.3 Social Room (2nd Storey) | <ul style="list-style-type: none"> N OTHER FACILITIES N1 Guardhouse N2 Pedestrian Gate N3 Management Office N4 Generator Set N5 Bin Centre (Basement) N6 Electrical Substation (Basement) N7 Main Distribution Frame Room (Basement) N8 Consumer Switch Room (Basement) N9 Streetside Seating Pods N10 Ventilation Shaft N11 Water Tank (Roof) |
|--|--|---|---|

Roof Terrace Landscape Plan & Facilities

North Continuum



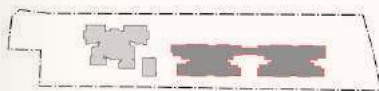
South Continuum



SKY GARDEN NORTH

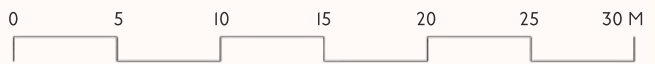


SKY GARDEN SOUTH



North Continuum

- P SKY GARDEN NORTH (BLK 1 & 3)
- P1 Sky Jacuzzi
- P2 Outdoor Lounge
- P3 Grill Deck
- P3.1 Resting Lounge
- P4 Community Garden
- P5 Bridge Deck
- P6 Hot Tub
- P7 Yoga Lawn
- P8 Outdoor Fitness Deck
- P9 Reading Deck
- P10 Sky Bar
- P11 Sky Fitness
- P12 Accessible Toilet
- P13 Outdoor Shower



BP APPROVAL NO.: AI716-00010-2021-BP01 DATED 24 MARCH 2023
ARTIST'S IMPRESSION

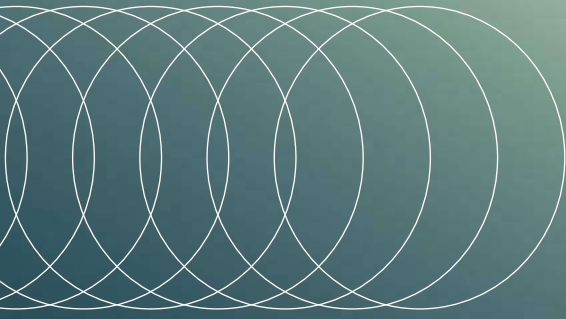
South Continuum

SKY GARDEN SOUTH (BLK 6 & 8)

- | | | |
|---------------------|-----------------|-----------------------|
| Q1 Grill Deck | Q5 Bridge Deck | Q10 Garden Deck |
| Q1.1 Resting Lounge | Q6 Sky Jacuzzi | Q11 Sky Club |
| Q2 Dining Deck | Q7 Hot Tub | Q12 Sky Gym |
| Q3 Hammock Deck | Q8 Yoga Lawn | Q13 Accessible Toilet |
| Q4 Swing Deck | Q9 Fitness Deck | Q14 Outdoor Shower |

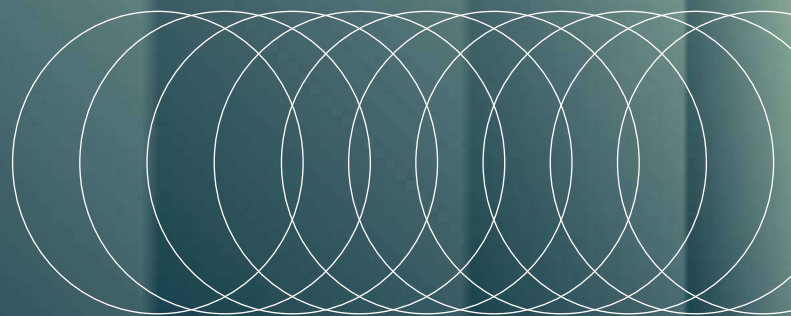
- N11 Water Tank (Roof)





Interiors

WHERE FORM, FUNCTION AND FINE LIVING CONVERGE

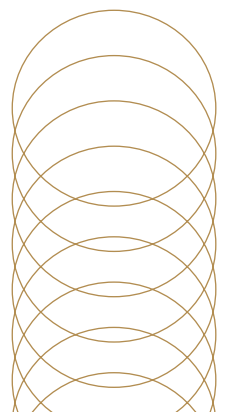




FOR ILLUSTRATION ONLY

Expressions of timelessness in next-generation spaces

Bespoke touches reveal elegant, enduring aesthetics in two distinct collections – Signature and Prestige. While flowing layouts are a hallmark of apartments at The Continuum, the two collections are exceptionally finished and dimensioned differently to suit various tastes and family sizes.





FOR ILLUSTRATION ONLY



FOR ILLUSTRATION ONLY

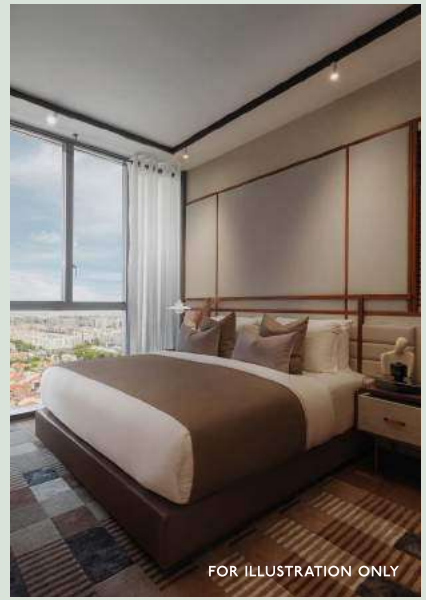
Signature Collection

The Signature Collection is poised to enchant your next chapter. Light, neutral tones accented with stone patterns and woodgrain finishes elicit natural warmth throughout the unit. With two to four bedrooms, the collection presents exciting singles pads and room for young families to blossom.

Each unit is conscientiously planned and efficiently designed with thoughtful integrations to amplify space. The master bedroom features a floor-to-ceiling wardrobe with a full-height mirror and side panel dresser built in for maximum storage.

Everyone dreams in comfort, as all rooms can accommodate at least a queen bed while the master bedroom fits a king. Meanwhile, storage spaces are well designed with ledges on the swing doors to help keep your home clutter-free.

For more possibilities, choose a Signature Premier unit with either a bigger foyer or a dry kitchen.



FOR ILLUSTRATION ONLY



FOR ILLUSTRATION ONLY







FOR ILLUSTRATION ONLY

“Imagine a place where two souls meet, a space where functionality and conviviality blend seamlessly together to create the perfect environment for fine living. Provisions are carefully curated to reflect the unique personalities and tastes of the two individuals who call it home.”

– HILARY LOH, DESIGN DIRECTOR

Prestige Collection

Your grand arrival experience continues with the Prestige Collection’s exclusive private lift lobby. For you, this is where privacy and comfort begin. A taste before you are whisked to the pinnacle of luxurious living at The Continuum.

Three, four and five-bedroom apartments await to soak in the exuberance of multigenerational families and surround you with quiet sophistication all at once. Take your time to appreciate the collection’s spatial generosity, carefully complemented with features of the finest natural stone, marble and craftsmanship.

Spacious walk-in wardrobes in the four and five-bedroom homes feature pull-out and side dressers for all your everyday needs. The indulgence continues in the bathroom with a soul-soothing rain shower and full-length bath.



FOR ILLUSTRATION ONLY



FOR ILLUSTRATION ONLY



FOR ILLUSTRATION ONLY



FOR ILLUSTRATION ONLY





FOR ILLUSTRATION ONLY



FOR ILLUSTRATION ONLY

Made with fine details

All apartments are generously furnished with select appliances and fixtures from esteemed makers at the peak of their craft.

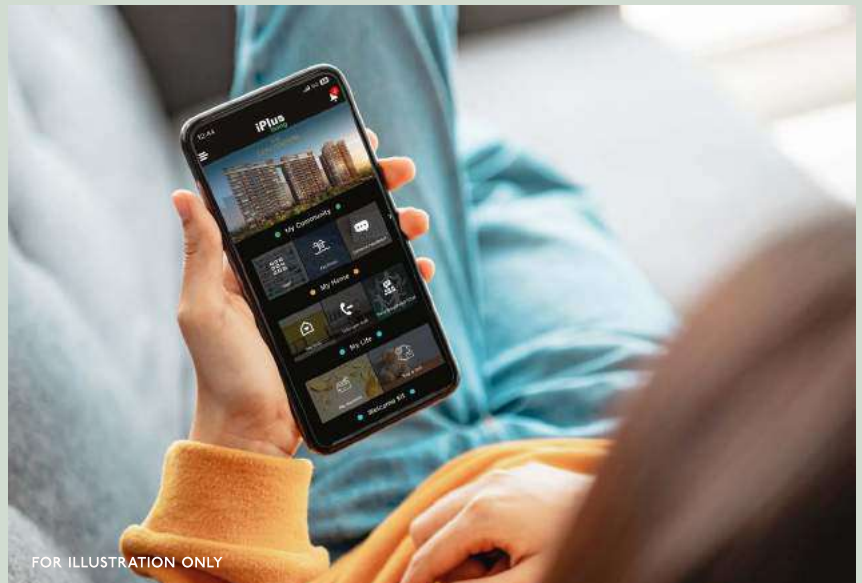
Fittings from V-Zug and Samsung elevate the kitchen along with your culinary and entertaining finesse and make clean-ups a breeze.

Laufen, Gessi and Tece pamper you in the bathroom, with selected units offering a full-length bath and a dual-basin vanity for five-star treatment.



Seamless living begins with smart simplicity

Welcome to urban living redefined with uncompromising sophistication and substance. The integrated smart system puts guest access, facility bookings, security and more at your fingertips so you don't miss a thing.



FOR ILLUSTRATION ONLY



SMART DOORBELL

Answer the door with your phone through a mobile app that lets you see and talk to visitors.



SMART LOCK

Enhance accessibility for loved ones by presetting five different ways to lock or unlock the door.



SMART AIRCON

Return to a home that truly relaxes you by remotely cooling your living room and master bedroom.



SMART GATEWAY

Have devices at your fingertips, with motion detection for added security.



SMART PARCEL

Deliveries never interrupt your flow. Send them to the parcel box and collect at your own time.



SMART BOOKING

Go from one pursuit to another seamlessly with a mobile app that lets you book facilities easily.



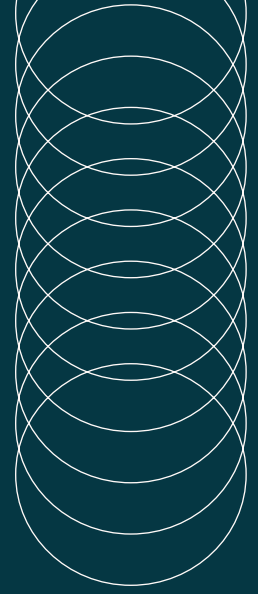
SMART LIFESTYLE

Flow between home, work and play with instant bookings and special deals tailored for you.



SMART INVITE

Managing guest lists is a breeze with quick-access QR and PIN codes to your gathering.



Redefining forever homes with green standards

Sustainability flows through the property's DNA. Designed with solar panels and passive design features along with energy-efficient appliances and fixtures, The Continuum is a home that cares for the future it was built for.



SUSTAINABILITY DRIVE

EV chargers conveniently located in the carpark let EV and hybrid car owners stay on course for a greener future seamlessly.



THERMAL COMFORT

Ceiling fan in either the living room or bedrooms make it a breeze to cool your home with minimal use of air-conditioning.



SOLAR SUPPLEMENTED

Solar panels power common areas to ease energy consumption from the grid, which equates to savings for the development.



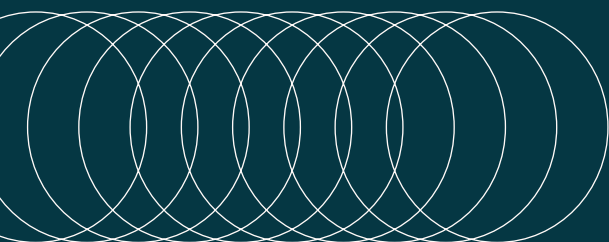
CERTIFIED SAFE

Appliances and fittings meet the Singapore Green Building Council standard and are low in Volatile Organic Compounds to keep your family healthy.



E-WASTE EASE

e-Waste bins offer a safe and convenient way to dispose of unwanted electronic devices. There is also a recyclables chute on every floor.



North Continuum

1 THIAM SIEW AVENUE (S436838)

	1	2	3	4	5	6	7	8	9
18	SKY TERRACE								
17	B2	C4-PH	D3-PH	A	B4	B4	C7-PH	C3-PH	B2
16	B2	C4	D3	A	B4	B4	C7	C3	B2
15	B2	C4	D3	A	B4	B4	C7	C3	B2
14	B2	C4	D3	A	B4	B4	C7	C3	B2
13	B2	C4	D3	A	B4	B4	C7	C3	B2
12	B2	C4	D3	A	B4	B4	C7	C3	B2
11	B2	C4	D3	A	B4	B4	C7	C3	B2
10	B2	C4	D3	A	B4	B4	C7	C3	B2
9	B2	C4	D3	A	B4	B4	C7	C3	B2
8	B2	C4	D3	A	B4	B4	C7	C3	B2
7	B2	C4	D3	A	B4	B4	C7	C3	B2
6	B2	C4	D3	A	B4	B4	C7	C3	B2
5	B2	C4	D3	A	B4	B4	C7	C3	B2
4	B2	C4	D3	A	B4	B4	C7	C3	B2
3	B2	C4	D3	A	B4	B4	C7	C3	B2
2	B2	C4	D3	A	B4	B4	C7	C3	B2
1	B2-G	C4-G	D3-G	A-G	B4-G	B3-G	C7-G		

SIGNATURE COLLECTION

1 BEDROOM + STUDY

A A, A-G

2 BEDROOM

B1 B1, B1-G, B1-PH

B2 B2, B2-G

2 BEDROOM + STUDY

B3-G B3-G

B4 B4, B4-G

3 BEDROOM

C1 C1, C1-G, C1-PH

C2 C2, C2-G, C2-PH

C3 C3, C3-PH

3 BEDROOM PREMIER

C4 C4, C4-G, C4-PH

C5 C5, C5-G, C5-PH

C6 C6, C6-G, C6-PH

C7 C7, C7-G, C7-PH

4 BEDROOM

D1 D1, D1-G, D1-PH

D2 D2, D2-G, D2-PH

D3 D3, D3-G, D3-PH

PRESTIGE COLLECTION

3 BEDROOM + STUDY

C8 C8, C8-G, C8-PH

C9 C9, C9-G, C9-PH

4 BEDROOM PREMIER

D4 D4, D4-PH

5 BEDROOM

E E, E-PH

3 THIAM SIEW AVENUE (S436841)

	10	11	12	13	14	15	16	17	18
18	SKY TERRACE								
17	B2	C4-PH	D2-PH	A	B4	B4	C5-PH	C2-PH	B2
16	B2	C4	D2	A	B4	B4	C5	C2	B2
15	B2	C4	D2	A	B4	B4	C5	C2	B2
14	B2	C4	D2	A	B4	B4	C5	C2	B2
13	B2	C4	D2	A	B4	B4	C5	C2	B2
12	B2	C4	D2	A	B4	B4	C5	C2	B2
11	B2	C4	D2	A	B4	B4	C5	C2	B2
10	B2	C4	D2	A	B4	B4	C5	C2	B2
9	B2	C4	D2	A	B4	B4	C5	C2	B2
8	B2	C4	D2	A	B4	B4	C5	C2	B2
7	B2	C4	D2	A	B4	B4	C5	C2	B2
6	B2	C4	D2	A	B4	B4	C5	C2	B2
5	B2	C4	D2	A	B4	B4	C5	C2	B2
4	B2	C4	D2	A	B4	B4	C5	C2	B2
3	B2	C4	D2	A	B4	B4	C5	C2	B2
2	B2	C4	D2	A	B4	B4	C5	C2	B2
1	B2-G	C4-G	D2-G	A-G	B4-G	B3-G	C5-G	C2-G	B2-G

5 THIAM SIEW AVENUE (S436843)

	19	20	21	22	23	24
18	E-PH	C9-PH	B1-PH	C8-PH	D4-PH	C1-PH
17	E	C9	B1	C8	D4	C1
16	E	C9	B1	C8	D4	C1
15	E	C9	B1	C8	D4	C1
14	E	C9	B1	C8	D4	C1
13	E	C9	B1	C8	D4	C1
12	E	C9	B1	C8	D4	C1
11	E	C9	B1	C8	D4	C1
10	E	C9	B1	C8	D4	C1
9	E	C9	B1	C8	D4	C1
8	E	C9	B1	C8	D4	C1
7	E	C9	B1	C8	D4	C1
6	E	C9	B1	C8	D4	C1
5	E	C9	B1	C8	D4	C1
4	E	C9	B1	C8	D4	C1
3	E	C9	B1	C8	D4	C1
2		C9	B1	C8		C1
1		C9-G	B1-G	C8-G		C1-G

South Continuum

2 THIAM SIEW AVENUE (S436839)

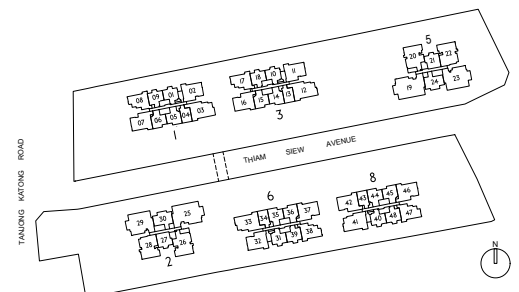
	25	26	27	28	29	30
18	E-PH	C9-PH	BI-PH	C8-PH	D4-PH	CI-PH
17	E	C9	BI	C8	D4	CI
16	E	C9	BI	C8	D4	CI
15	E	C9	BI	C8	D4	CI
14	E	C9	BI	C8	D4	CI
13	E	C9	BI	C8	D4	CI
12	E	C9	BI	C8	D4	CI
11	E	C9	BI	C8	D4	CI
10	E	C9	BI	C8	D4	CI
9	E	C9	BI	C8	D4	CI
8	E	C9	BI	C8	D4	CI
7	E	C9	BI	C8	D4	CI
6	E	C9	BI	C8	D4	CI
5	E	C9	BI	C8	D4	CI
4	E	C9	BI	C8	D4	CI
3	E	C9	BI	C8	D4	CI
2		C9	BI	C8		CI
1		C9-G	BI-G	C8-G		CI-G

6 THIAM SIEW AVENUE (S436844)

	31	32	33	34	35	36	37	38	39
18	SKY TERRACE								
17	B2	C4-PH	D2-PH	A	B4	B4	C5-PH	C2-PH	B2
16	B2	C4	D2	A	B4	B4	C5	C2	B2
15	B2	C4	D2	A	B4	B4	C5	C2	B2
14	B2	C4	D2	A	B4	B4	C5	C2	B2
13	B2	C4	D2	A	B4	B4	C5	C2	B2
12	B2	C4	D2	A	B4	B4	C5	C2	B2
11	B2	C4	D2	A	B4	B4	C5	C2	B2
10	B2	C4	D2	A	B4	B4	C5	C2	B2
9	B2	C4	D2	A	B4	B4	C5	C2	B2
8	B2	C4	D2	A	B4	B4	C5	C2	B2
7	B2	C4	D2	A	B4	B4	C5	C2	B2
6	B2	C4	D2	A	B4	B4	C5	C2	B2
5	B2	C4	D2	A	B4	B4	C5	C2	B2
4	B2	C4	D2	A	B4	B4	C5	C2	B2
3	B2	C4	D2	A	B4	B4	C5	C2	B2
2	B2	C4	D2	A	B4	B4	C5	C2	B2
1	B2-G	C4-G	D2-G	A-G	B4-G	B3-G	C5-G	C2-G	B2-G

8 THIAM SIEW AVENUE (S436846)

	40	41	42	43	44	45	46	47	48
18	SKY TERRACE								
17	B2	DI-PH	C5-PH	A	B4	B4	C6-PH	C2-PH	B2
16	B2	DI	C5	A	B4	B4	C6	C2	B2
15	B2	DI	C5	A	B4	B4	C6	C2	B2
14	B2	DI	C5	A	B4	B4	C6	C2	B2
13	B2	DI	C5	A	B4	B4	C6	C2	B2
12	B2	DI	C5	A	B4	B4	C6	C2	B2
11	B2	DI	C5	A	B4	B4	C6	C2	B2
10	B2	DI	C5	A	B4	B4	C6	C2	B2
9	B2	DI	C5	A	B4	B4	C6	C2	B2
8	B2	DI	C5	A	B4	B4	C6	C2	B2
7	B2	DI	C5	A	B4	B4	C6	C2	B2
6	B2	DI	C5	A	B4	B4	C6	C2	B2
5	B2	DI	C5	A	B4	B4	C6	C2	B2
4	B2	DI	C5	A	B4	B4	C6	C2	B2
3	B2	DI	C5	A	B4	B4	C6	C2	B2
2	B2	DI	C5	A	B4	B4	C6	C2	B2
1	B2-G	DI-G	C5-G	A-G	B4-G	B3-G	C6-G		



Type A

1 BEDROOM + STUDY

Type A-G

52 m² / 560 ft²

Inclusive of 5 m² PES & 3 m² AC Ledge

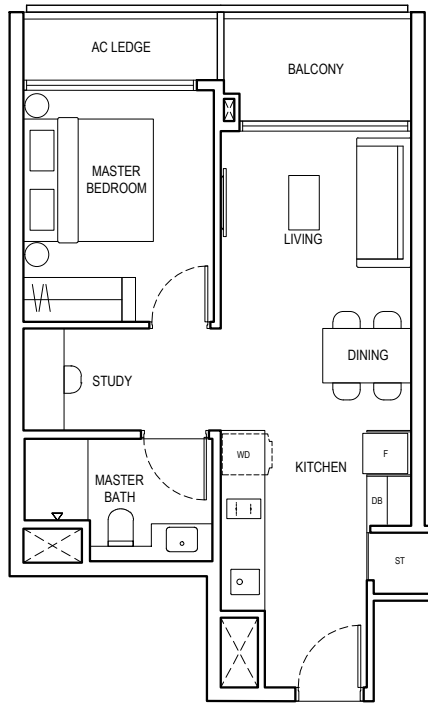
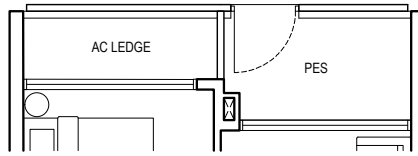
- BLOCK 1** #01-04
- BLOCK 3** #01-13
- BLOCK 6** #01-34
- BLOCK 8** #01-43

Type A

52 m² / 560 ft²

Inclusive of 5 m² Balcony & 3 m² AC Ledge

- BLOCK 1** #02-04 to #17-04
- BLOCK 3** #02-13 to #17-13
- BLOCK 6** #02-34 to #17-34
- BLOCK 8** #02-43 to #17-43

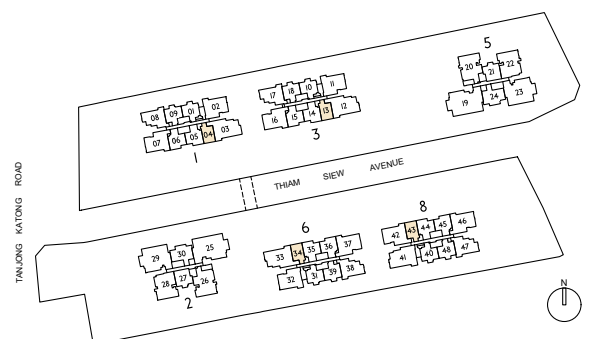


LEGEND

- | | | | |
|-----|------------------------|----|---|
| PES | PRIVATE ENCLOSED SPACE | AC | AIR-CONDITIONER |
| DB | DISTRIBUTION BOARD | ST | STORE |
| F | FRIDGE | RC | REINFORCED CONCRETE (EXCLUDED FROM STRATA AREA) |
| WD | WASHER DRYER COMBO | | VOID SPACE (EXCLUDED FROM STRATA AREA) |



ALL PLANS ARE SUBJECT TO CHANGES BY THE RELEVANT AUTHORITIES.
 MEASUREMENTS ARE APPROXIMATE ONLY AND SUBJECT TO FINAL SURVEY.
 INFORMATION ACCURATE AT POINT OF PRINTING.
 BP APPROVAL NO.: A1716-00010-2021-BP01 DATED 24/03/2023



Type B1

2 BEDROOM

Type B1-G

60 m² / 646 ft²

Inclusive of 5 m² PES & 4 m² AC Ledge

BLOCK 2 #01-27
BLOCK 5 #01-21

Type B1

60 m² / 646 ft²

Inclusive of 5 m² Balcony & 3 m² AC Ledge

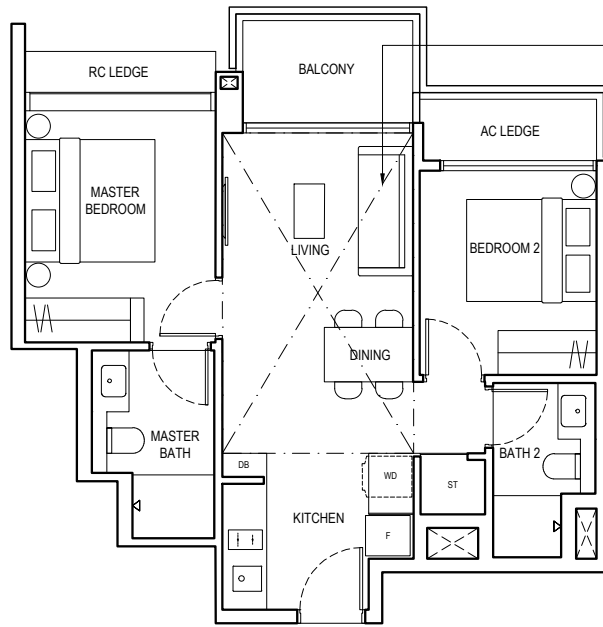
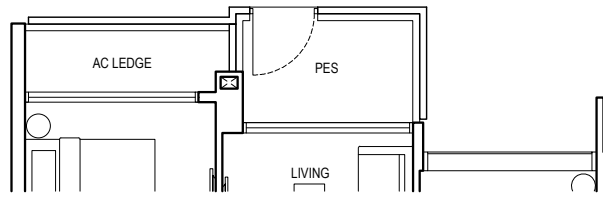
BLOCK 2 #02-27 to #17-27
BLOCK 5 #02-21 to #17-21

Type B1-PH

75 m² / 807 ft²

Inclusive of 15 m² Strata Void, 5 m² Balcony & 3 m² AC Ledge

BLOCK 2 #18-27
BLOCK 5 #18-21



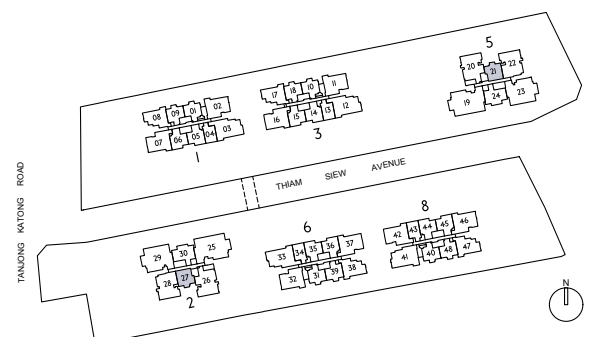
DOTTED LINE DENOTES STRATA VOID COMPLETE WITH BULKHEAD AT TYPE B1-PH

LEGEND

PES	PRIVATE ENCLOSED SPACE	AC	AIR-CONDITIONER
DB	DISTRIBUTION BOARD	ST	STORE I
F	FRIDGE	RC	REINFORCED CONCRETE (EXCLUDED FROM STRATA AREA)
WD	WASHER DRYER COMBO	☐	VOID SPACE (EXCLUDED FROM STRATA AREA)



ALL PLANS ARE SUBJECT TO CHANGES BY THE RELEVANT AUTHORITIES. MEASUREMENTS ARE APPROXIMATE ONLY AND SUBJECT TO FINAL SURVEY. INFORMATION ACCURATE AT POINT OF PRINTING. BP APPROVAL NO.: A1716-00010-2021-BP01 DATED 24/03/2023



Type B2

2 BEDROOM

Type B2-G

62 m² / 667 ft²

Inclusive of 5 m² PES & 3 m² AC ledge

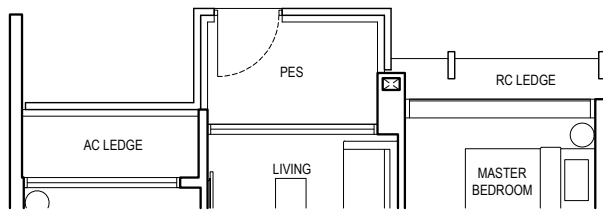
- BLOCK 1** #01-01*
- BLOCK 3** #01-10*
- BLOCK 3** #01-18
- BLOCK 6** #01-31*
- BLOCK 6** #01-39
- BLOCK 8** #01-40*

Type B2

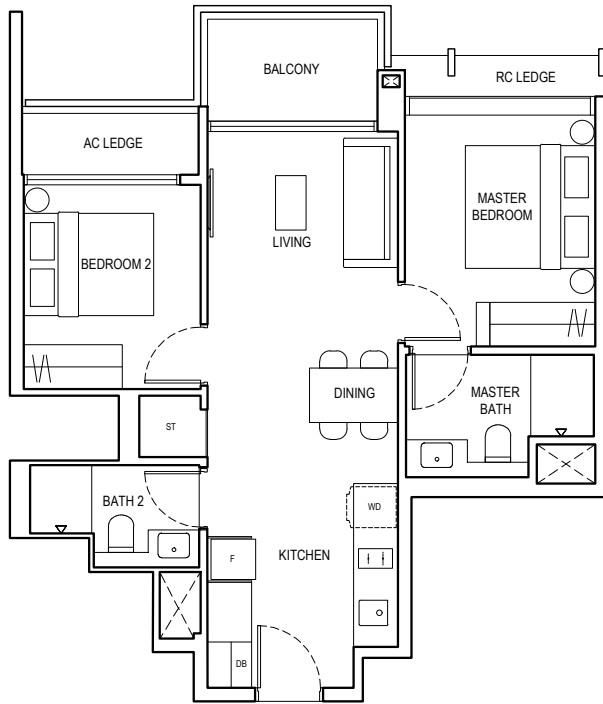
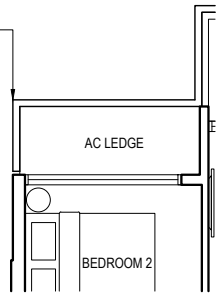
62 m² / 667 ft²

Inclusive of 5 m² Balcony & 3 m² AC ledge

- BLOCK 1** #02-01* to #17-01*
- BLOCK 1** #02-09 to #17-09
- BLOCK 3** #02-10* to #17-10*
- BLOCK 3** #02-18 to #17-18
- BLOCK 6** #02-31* to #17-31*
- BLOCK 6** #02-39 to #17-39
- BLOCK 8** #02-40* to #17-40*
- BLOCK 8** #02-48 to #17-48



FOR UNITS:
#01-01 TO 17-01*
#01-10 TO 17-10*
#01-31 TO 17-31*
#01-40 TO 17-40*

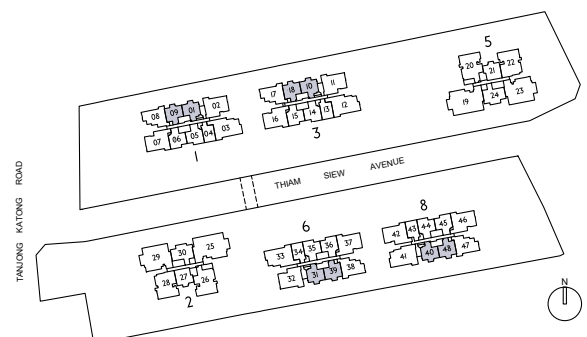


LEGEND

- | | | | |
|-----|------------------------|----|---|
| PES | PRIVATE ENCLOSED SPACE | ST | STORE |
| DB | DISTRIBUTION BOARD | RC | REINFORCED CONCRETE (EXCLUDED FROM STRATA AREA) |
| F | FRIDGE | | VOID SPACE (EXCLUDED FROM STRATA AREA) |
| WD | WASHER DRYER COMBO | * | MIRRORED UNIT |
| AC | AIR-CONDITIONER | | |



ALL PLANS ARE SUBJECT TO CHANGES BY THE RELEVANT AUTHORITIES.
MEASUREMENTS ARE APPROXIMATE ONLY AND SUBJECT TO FINAL SURVEY.
INFORMATION ACCURATE AT POINT OF PRINTING.
BP APPROVAL NO.: A1716-00010-2021-BP01 DATED 24/03/2023



Type B3

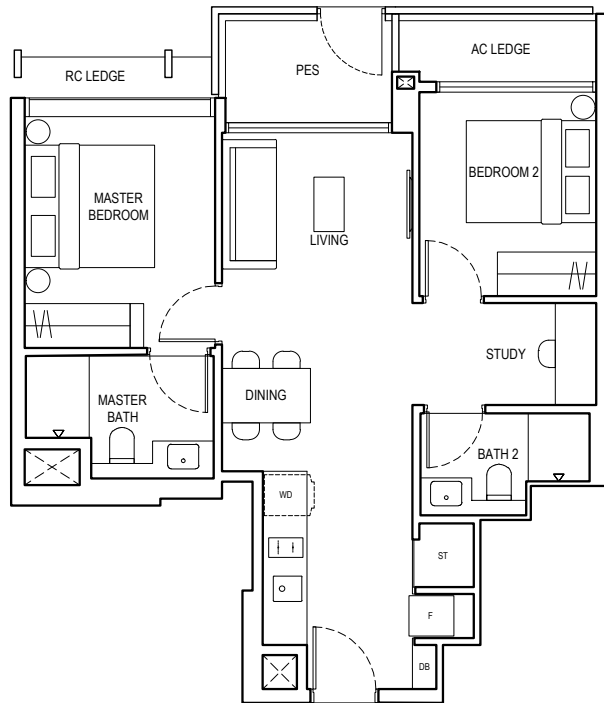
2 BEDROOM + STUDY

Type B3-G

65 m² / 700 ft²

Inclusive of 5 m² PES &
3 m² AC Ledge

- BLOCK 1** #01-06
- BLOCK 3** #01-15
- BLOCK 6** #01-36
- BLOCK 8** #01-45

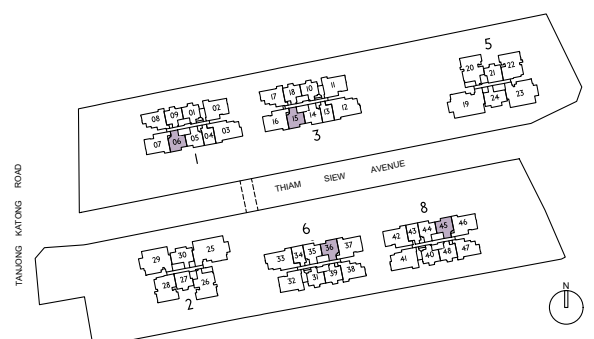


LEGEND

PES	PRIVATE ENCLOSED SPACE	AC	AIR-CONDITIONER
DB	DISTRIBUTION BOARD	ST	STORE I
F	FRIDGE	RC	REINFORCED CONCRETE (EXCLUDED FROM STRATA AREA)
WD	WASHER DRYER COMBO		VOID SPACE (EXCLUDED FROM STRATA AREA)

0 1 2 3 4 5M

ALL PLANS ARE SUBJECT TO CHANGES BY THE RELEVANT AUTHORITIES.
MEASUREMENTS ARE APPROXIMATE ONLY AND SUBJECT TO FINAL SURVEY.
INFORMATION ACCURATE AT POINT OF PRINTING.
BP APPROVAL NO.: A1716-00010-2021-BP01 DATED 24/03/2023



Type B4

2 BEDROOM + STUDY

Type B4-G

67 m² / 721 ft²

Inclusive of 5 m² PES & 3 m² AC Ledge

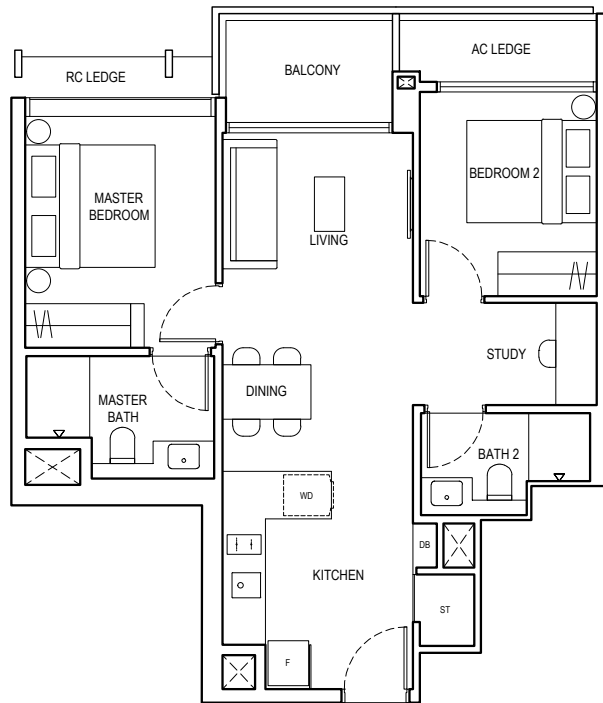
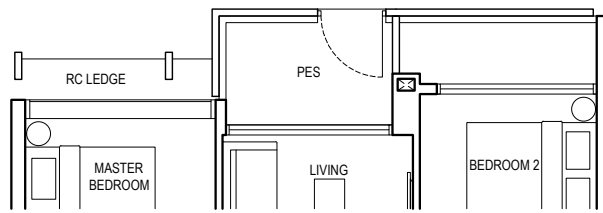
- BLOCK 1** #01-05*
- BLOCK 3** #01-14*
- BLOCK 6** #01-35*
- BLOCK 8** #01-44*

Type B4

67 m² / 721 ft²

Inclusive of 5 m² Balcony & 3 m² AC Ledge

- BLOCK 1** #02-05* to #17-05*
- BLOCK 1** #02-06 to #17-06
- BLOCK 3** #02-14* to #17-14*
- BLOCK 3** #02-15 to #17-15
- BLOCK 6** #02-35* to #17-35*
- BLOCK 6** #02-36 to #17-36
- BLOCK 8** #02-44* to #17-44*
- BLOCK 8** #02-45 to #17-45



LEGEND

- | | | | |
|-----|------------------------|----|---|
| PES | PRIVATE ENCLOSED SPACE | ST | STORE |
| DB | DISTRIBUTION BOARD | RC | REINFORCED CONCRETE (EXCLUDED FROM STRATA AREA) |
| F | FRIDGE | | VOID SPACE (EXCLUDED FROM STRATA AREA) |
| WD | WASHER DRYER COMBO | * | MIRRORED UNIT |
| AC | AIR-CONDITIONER | | |



ALL PLANS ARE SUBJECT TO CHANGES BY THE RELEVANT AUTHORITIES.
 MEASUREMENTS ARE APPROXIMATE ONLY AND SUBJECT TO FINAL SURVEY.
 INFORMATION ACCURATE AT POINT OF PRINTING.
 BP APPROVAL NO.: A1716-00010-2021-BP01 DATED 24/03/2023



Type C1

3 BEDROOM

Type C1-G

81 m² / 872 ft²

Inclusive of 5 m² PES & 5 m² AC Ledge

BLOCK 2 #01-30
BLOCK 5 #01-24

Type C1

81 m² / 872 ft²

Inclusive of 5 m² Balcony & 5 m² AC Ledge

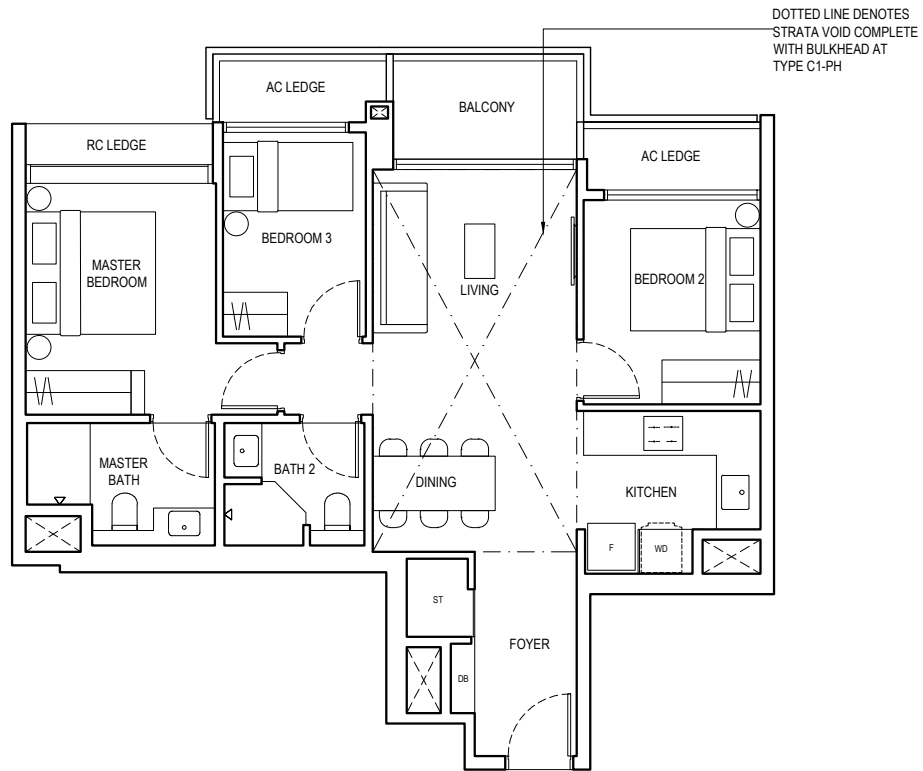
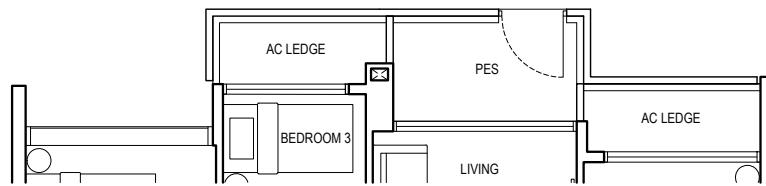
BLOCK 2 #02-30 to #17-30
BLOCK 5 #02-24 to #17-24

Type C1-PH

100 m² / 1076 ft²

Inclusive of 19 m² Strata Void, 5 m² Balcony & 5 m² AC Ledge

BLOCK 2 #18-30
BLOCK 5 #18-24

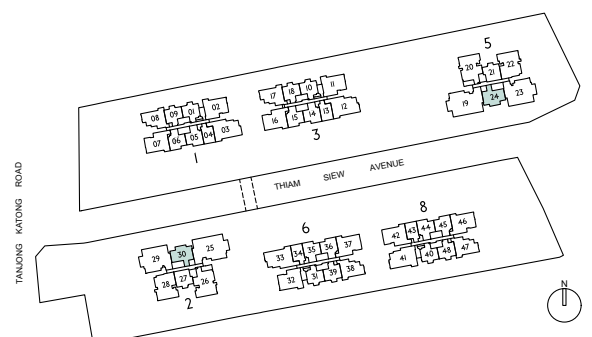


LEGEND

PES	PRIVATE ENCLOSED SPACE	AC	AIR-CONDITIONER
DB	DISTRIBUTION BOARD	ST	STORE I
F	FRIDGE	RC	REINFORCED CONCRETE (EXCLUDED FROM STRATA AREA)
WD	WASHER DRYER COMBO	☐	VOID SPACE (EXCLUDED FROM STRATA AREA)



ALL PLANS ARE SUBJECT TO CHANGES BY THE RELEVANT AUTHORITIES.
MEASUREMENTS ARE APPROXIMATE ONLY AND SUBJECT TO FINAL SURVEY.
INFORMATION ACCURATE AT POINT OF PRINTING.
BP APPROVAL NO.: A1716-00010-2021-BP01 DATED 24/03/2023



Type C2

3 BEDROOM

Type C2-G

88 m² / 947 ft²

Inclusive of 5 m² PES & 5 m² AC Ledge

BLOCK 3 #01-17
BLOCK 6 #01-38

Type C2

88 m² / 947 ft²

Inclusive of 5 m² Balcony & 5 m² AC Ledge

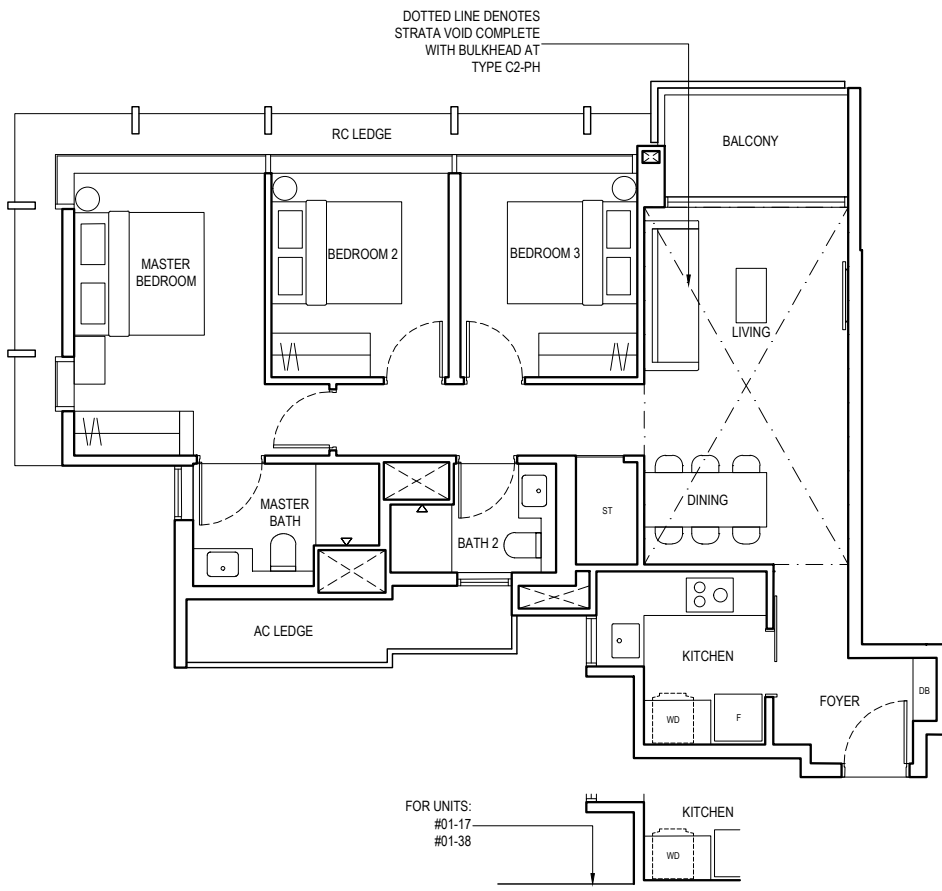
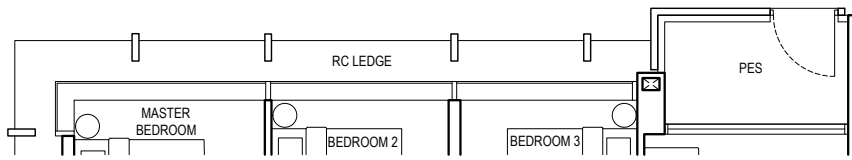
BLOCK 3 #02-17 to #16-17
BLOCK 6 #02-38 to #16-38
BLOCK 8 #02-47 to #16-47

Type C2-PH

105 m² / 1130 ft²

Inclusive of 17 m² Strata Void, 5 m² Balcony & 5 m² AC Ledge

BLOCK 3 #17-17
BLOCK 6 #17-38
BLOCK 8 #17-47



LEGEND

PES	PRIVATE ENCLOSED SPACE	AC	AIR-CONDITIONER
DB	DISTRIBUTION BOARD	ST	STORE
F	FRIDGE	RC	REINFORCED CONCRETE (EXCLUDED FROM STRATA AREA)
WD	WASHER DRYER COMBO	□	VOID SPACE (EXCLUDED FROM STRATA AREA)



ALL PLANS ARE SUBJECT TO CHANGES BY THE RELEVANT AUTHORITIES.
MEASUREMENTS ARE APPROXIMATE ONLY AND SUBJECT TO FINAL SURVEY.
INFORMATION ACCURATE AT POINT OF PRINTING.
BP APPROVAL NO.: A1716-00010-2021-BP01 DATED 24/03/2023



Type C3

3 BEDROOM

Type C3

88 m² / 947 ft²

Inclusive of 5 m² Balcony & 5 m² AC Ledge

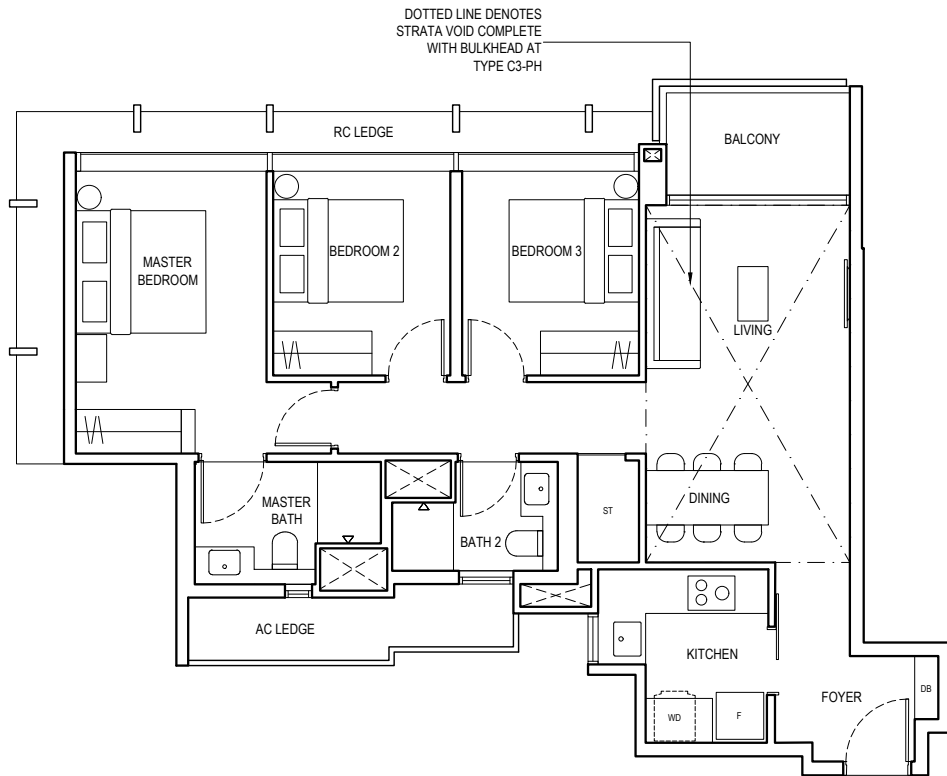
BLOCK I #02-08 to #16-08

Type C3-PH

106 m² / 1141 ft²

Inclusive of 18 m² Strata Void, 5 m² Balcony & 5 m² AC Ledge

BLOCK I #17-08

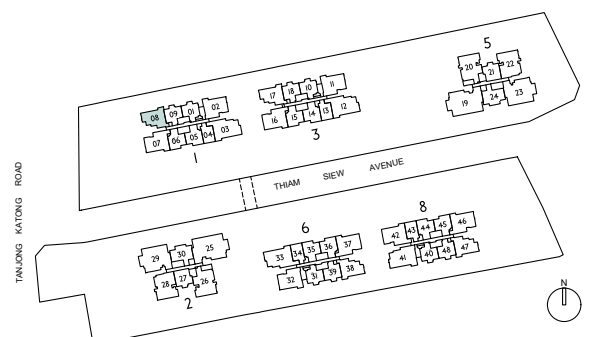


LEGEND

PES	PRIVATE ENCLOSED SPACE	AC	AIR-CONDITIONER
DB	DISTRIBUTION BOARD	ST	STORE
F	FRIDGE	RC	REINFORCED CONCRETE (EXCLUDED FROM STRATA AREA)
WD	WASHER DRYER COMBO		VOID SPACE (EXCLUDED FROM STRATA AREA)



ALL PLANS ARE SUBJECT TO CHANGES BY THE RELEVANT AUTHORITIES.
MEASUREMENTS ARE APPROXIMATE ONLY AND SUBJECT TO FINAL SURVEY.
INFORMATION ACCURATE AT POINT OF PRINTING.
BP APPROVAL NO.: A1716-00010-2021-BP01 DATED 24/03/2023



Type C4

3 BEDROOM PREMIER

Type C4-G

99 m² / 1066 ft²

Inclusive of 5 m² PES & 6 m² AC Ledge

BLOCK 1 #01-02
BLOCK 3 #01-11
BLOCK 6 #01-32

Type C4

99 m² / 1066 ft²

Inclusive of 5 m² Balcony & 6 m² AC Ledge

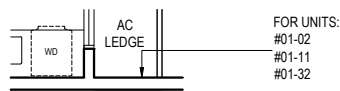
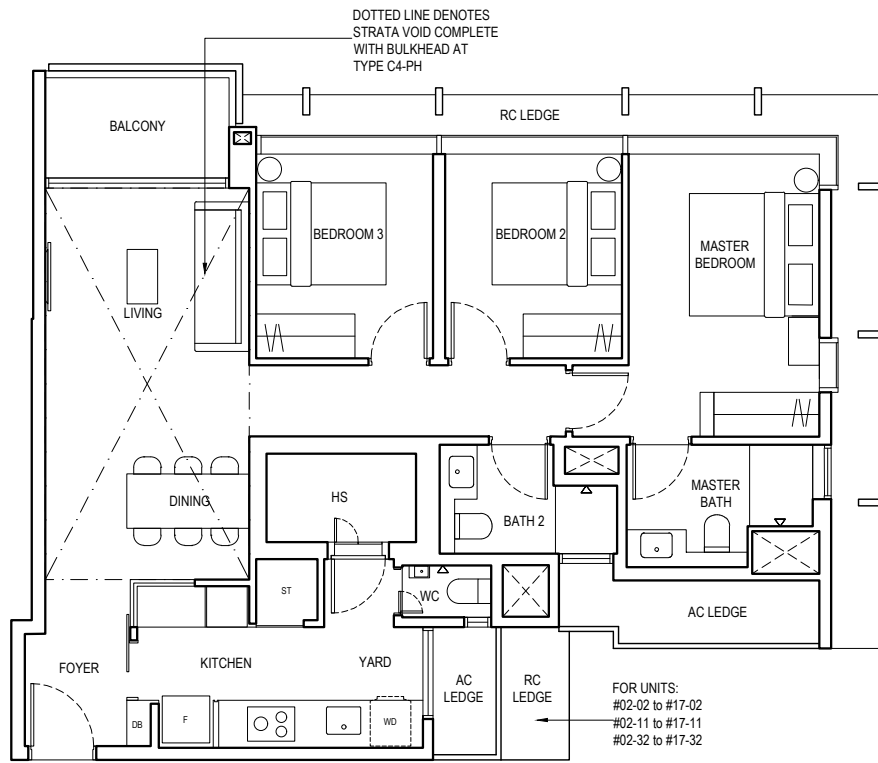
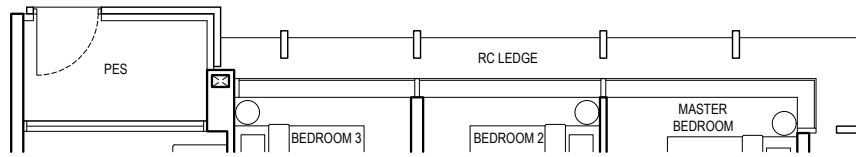
BLOCK 1 #02-02 to #16-02
BLOCK 3 #02-11 to #16-11
BLOCK 6 #02-32 to #16-32

Type C4-PH

119 m² / 1281 ft²

Inclusive of 20 m² Strata Void, 5 m² Balcony & 6 m² AC Ledge

BLOCK 1 #17-02
BLOCK 3 #17-11
BLOCK 6 #17-32



LEGEND

PES	PRIVATE ENCLOSED SPACE	ST	STORE I
DB	DISTRIBUTION BOARD	HS	HOUSEHOLD SHELTER
F	FRIDGE	WC	WATER CLOSET
WD	WASHER DRYER COMBO	RC	REINFORCED CONCRETE (EXCLUDED FROM STRATA AREA)
AC	AIR-CONDITIONER	□	VOID SPACE (EXCLUDED FROM STRATA AREA)



ALL PLANS ARE SUBJECT TO CHANGES BY THE RELEVANT AUTHORITIES.
 MEASUREMENTS ARE APPROXIMATE ONLY AND SUBJECT TO FINAL SURVEY.
 INFORMATION ACCURATE AT POINT OF PRINTING.
 BP APPROVAL NO.: A1716-00010-2021-BP01 DATED 24/03/2023



Type C5

3 BEDROOM PREMIER

Type C5-G

101 m² / 1087 ft²

Inclusive of 5 m² PES & 6 m² AC Ledge

BLOCK 3 #01-16
BLOCK 6 #01-37
BLOCK 8 #01-42*

Type C5

101 m² / 1087 ft²

Inclusive of 5 m² Balcony & 6 m² AC ledge

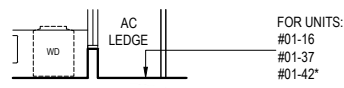
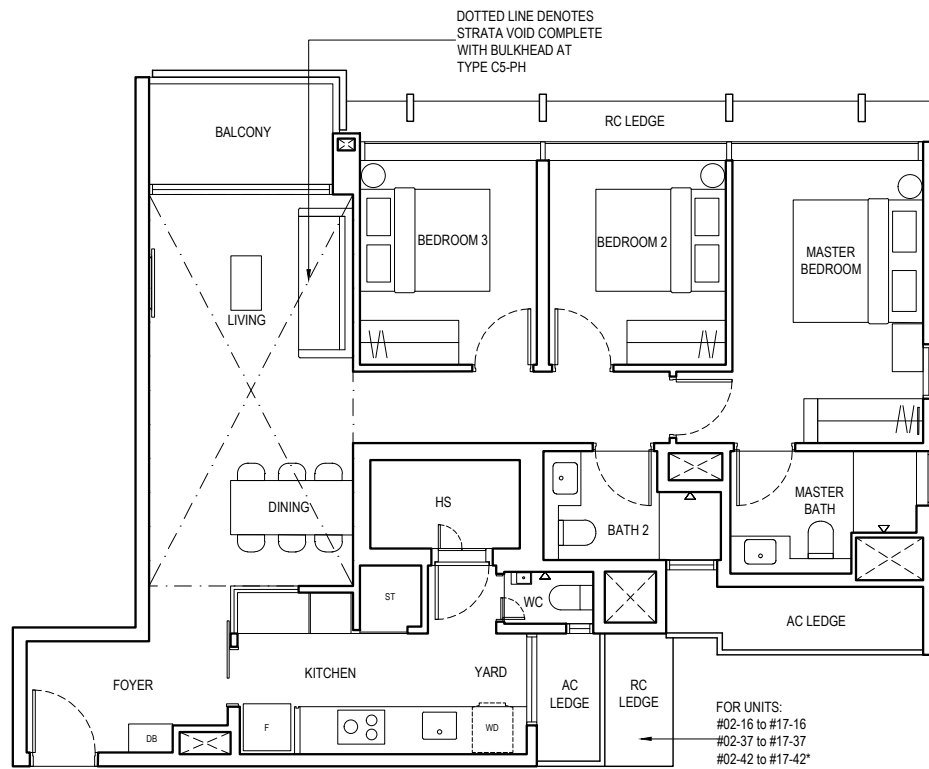
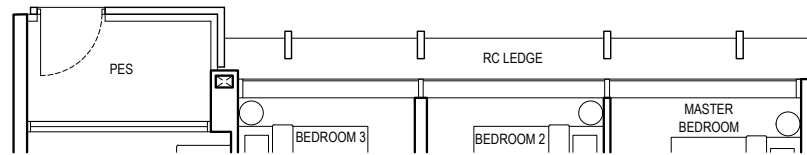
BLOCK 3 #02-16 to #16-16
BLOCK 6 #02-37 to #16-37
BLOCK 8 #02-42* to #16-42*

Type C5-PH

121 m² / 1302 ft²

Inclusive of 20 m² Strata Void, 5 m² Balcony & 6 m² AC Ledge

BLOCK 3 #17-16
BLOCK 6 #17-37
BLOCK 8 #17-42*



LEGEND

PES	PRIVATE ENCLOSED SPACE	HS	HOUSEHOLD SHELTER
DB	DISTRIBUTION BOARD	WC	WATER CLOSET
F	FRIDGE	RC	REINFORCED CONCRETE (EXCLUDED FROM STRATA AREA)
WD	WASHER DRYER COMBO		VOID SPACE (EXCLUDED FROM STRATA AREA)
AC	AIR-CONDITIONER	*	MIRRORED UNIT
ST	STORE		



ALL PLANS ARE SUBJECT TO CHANGES BY THE RELEVANT AUTHORITIES.
 MEASUREMENTS ARE APPROXIMATE ONLY AND SUBJECT TO FINAL SURVEY.
 INFORMATION ACCURATE AT POINT OF PRINTING.
 BP APPROVAL NO.: A1716-00010-2021-BP01 DATED 24/03/2023



Type C6

3 BEDROOM PREMIER

Type C6-G

101 m² / 1087 ft²

Inclusive of 5 m² PES & 6 m² AC Ledge

BLOCK 8 #01-46

Type C6

101 m² / 1087 ft²

Inclusive of 5 m² Balcony & 6 m² AC Ledge

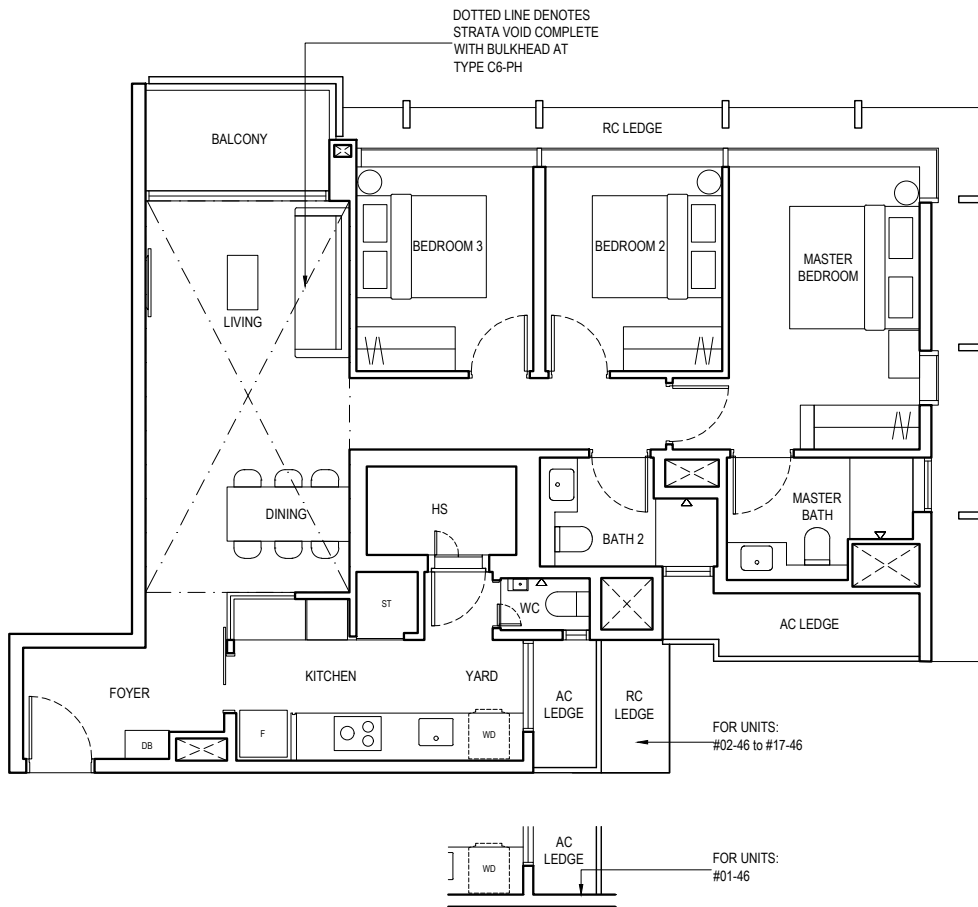
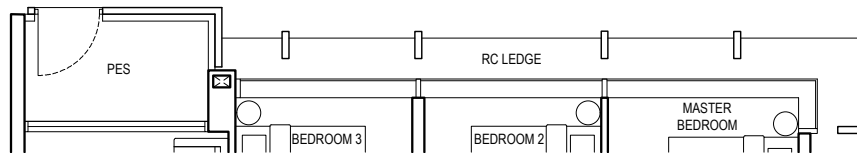
BLOCK 8 #02-46 to #16-46

Type C6-PH

121 m² / 1302 ft²

Inclusive of 20 m² Strata Void, 5 m² Balcony & 6 m² AC Ledge

BLOCK 8 #17-46

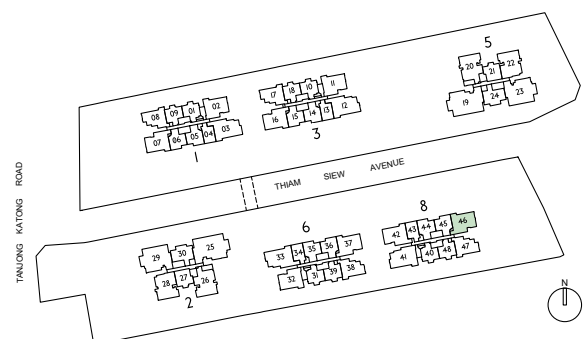


LEGEND

PES	PRIVATE ENCLOSED SPACE	HS	HOUSEHOLD SHELTER
DB	DISTRIBUTION BOARD	WC	WATER CLOSET
F	FRIDGE	RC	REINFORCED CONCRETE (EXCLUDED FROM STRATA AREA)
WD	WASHER DRYER COMBO		VOID SPACE (EXCLUDED FROM STRATA AREA)
AC	AIR-CONDITIONER	*	MIRRORED UNIT
ST	STORE I		



ALL PLANS ARE SUBJECT TO CHANGES BY THE RELEVANT AUTHORITIES. MEASUREMENTS ARE APPROXIMATE ONLY AND SUBJECT TO FINAL SURVEY. INFORMATION ACCURATE AT POINT OF PRINTING. BP APPROVAL NO.: A1716-00010-2021-BP01 DATED 24/03/2023



Type C7

3 BEDROOM PREMIER

Type C7-G

101 m² / 1087 ft²

Inclusive of 5 m² PES & 6 m² AC Ledge

BLOCK I #01-07

Type C7

101 m² / 1087 ft²

Inclusive of 5 m² Balcony & 6 m² AC ledge

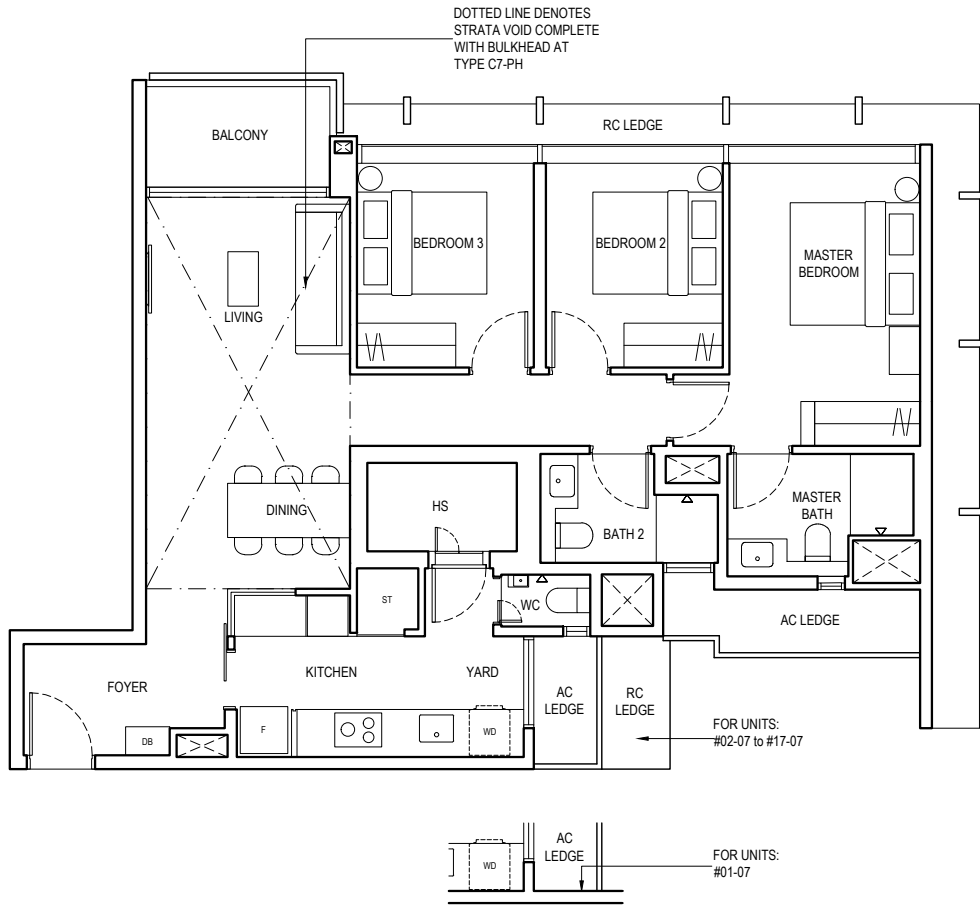
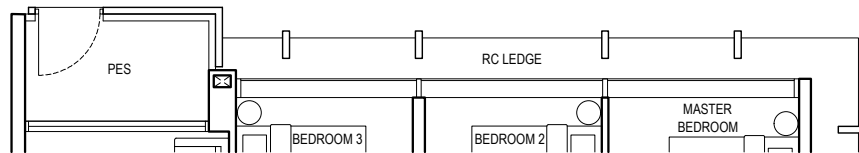
BLOCK I #02-07 to #16-07

Type C7-PH

121 m² / 1302 ft²

Inclusive of 20 m² Strata Void, 5 m² Balcony & 6 m² AC Ledge

BLOCK I #17-07

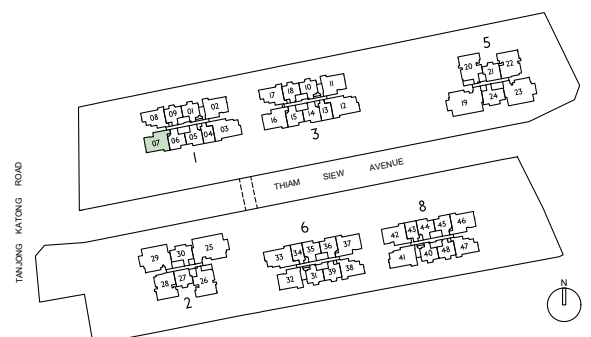


LEGEND

PES	PRIVATE ENCLOSED SPACE	HS	HOUSEHOLD SHELTER
DB	DISTRIBUTION BOARD	WC	WATER CLOSET
F	FRIDGE	RC	REINFORCED CONCRETE (EXCLUDED FROM STRATA AREA)
WD	WASHER DRYER COMBO		VOID SPACE (EXCLUDED FROM STRATA AREA)
AC	AIR-CONDITIONER	*	MIRRORED UNIT
ST	STORE I		



ALL PLANS ARE SUBJECT TO CHANGES BY THE RELEVANT AUTHORITIES. MEASUREMENTS ARE APPROXIMATE ONLY AND SUBJECT TO FINAL SURVEY. INFORMATION ACCURATE AT POINT OF PRINTING. BP APPROVAL NO.: A1716-00010-2021-BP01 DATED 24/03/2023



Type C8

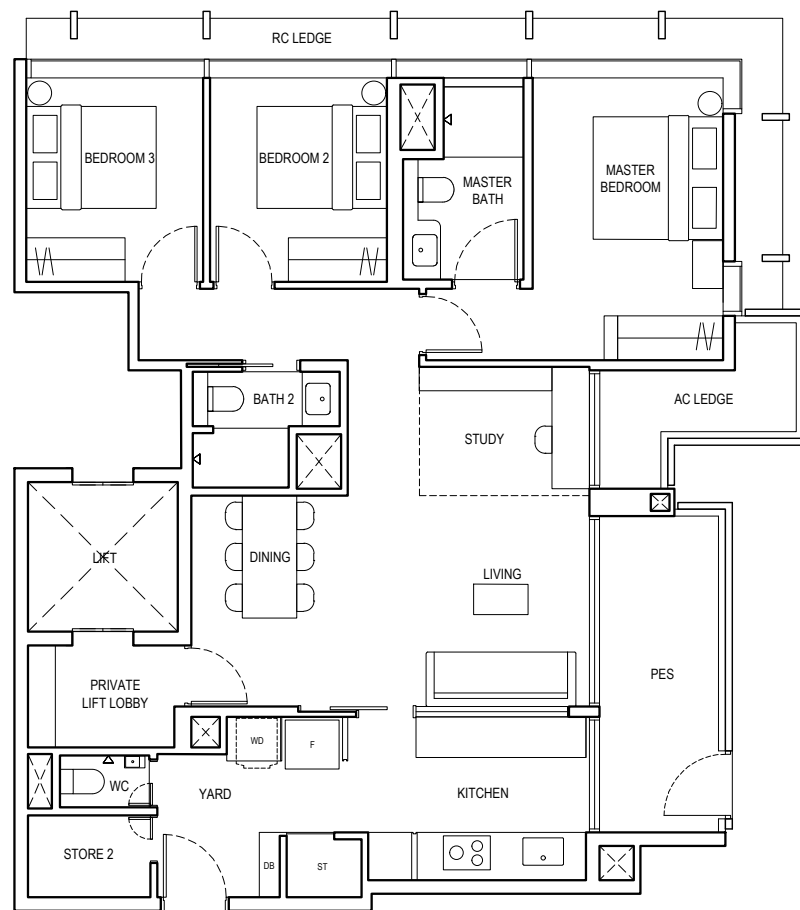
3 BEDROOM + STUDY

Type C8-G

114 m² / 1227 ft²

Inclusive of 10 m² PES &
5 m² AC Ledge

BLOCK 2 #01-28
BLOCK 5 #01-22



LEGEND

PES	PRIVATE ENCLOSED SPACE	ST	STORE 1
DB	DISTRIBUTION BOARD	WC	WATER CLOSET
F	FRIDGE	RC	REINFORCED CONCRETE (EXCLUDED FROM STRATA AREA)
WD	WASHER DRYER COMBO	☐	VOID SPACE (EXCLUDED FROM STRATA AREA)
AC	AIR-CONDITIONER		



ALL PLANS ARE SUBJECT TO CHANGES BY THE RELEVANT AUTHORITIES.
MEASUREMENTS ARE APPROXIMATE ONLY AND SUBJECT TO FINAL SURVEY.
INFORMATION ACCURATE AT POINT OF PRINTING.
BP APPROVAL NO.: A1716-00010-2021-BP01 DATED 24/03/2023



Type C8

3 BEDROOM + STUDY

Type C8

115 m² / 1238 ft²

Inclusive of 10 m² Balcony & 6 m² AC Ledge

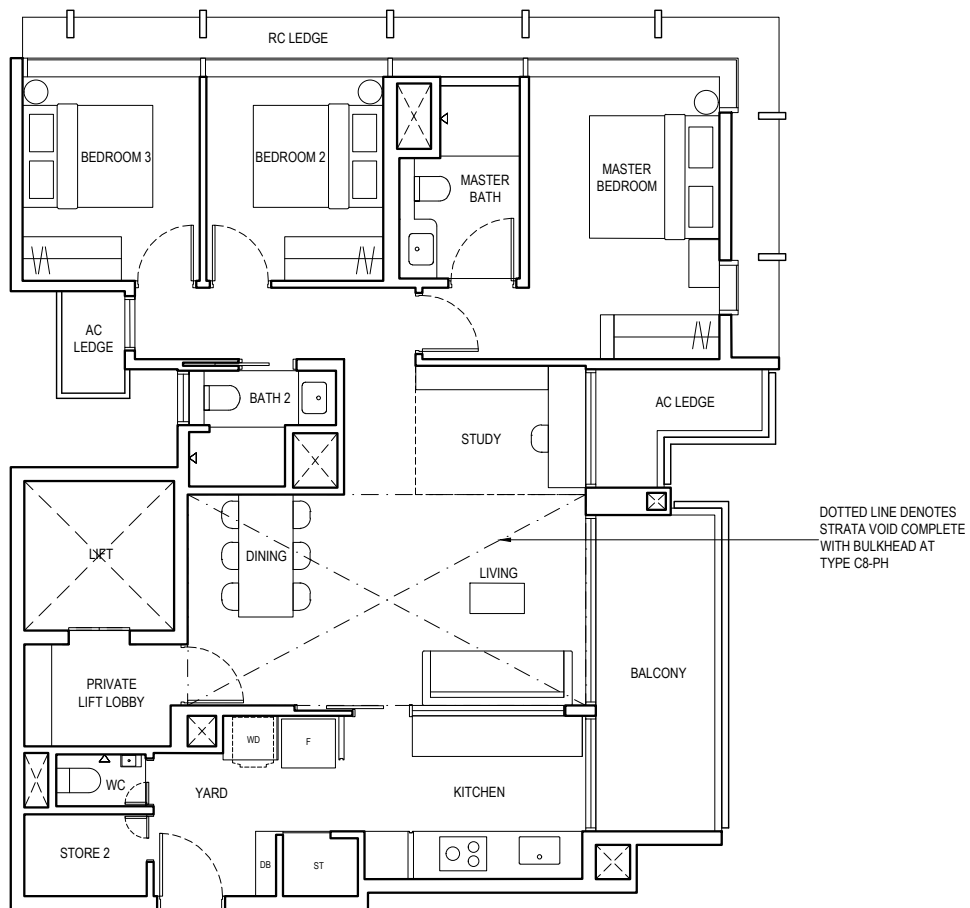
BLOCK 2 #02-28 to #17-28
BLOCK 5 #02-22 to #17-22

Type C8-PH

135 m² / 1453 ft²

Inclusive of 20 m² Strata Void, 10 m² Balcony & 6 m² AC ledge

BLOCK 2 #18-28
BLOCK 5 #18-22

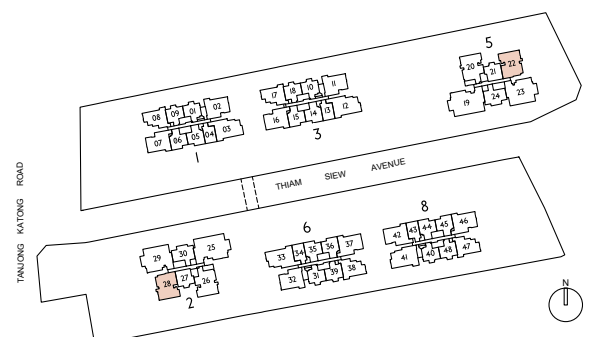


LEGEND

PES	PRIVATE ENCLOSED SPACE	ST	STORE 1
DB	DISTRIBUTION BOARD	WC	WATER CLOSET
F	FRIDGE	RC	REINFORCED CONCRETE (EXCLUDED FROM STRATA AREA)
WD	WASHER DRYER COMBO		VOID SPACE (EXCLUDED FROM STRATA AREA)
AC	AIR-CONDITIONER		



ALL PLANS ARE SUBJECT TO CHANGES BY THE RELEVANT AUTHORITIES.
MEASUREMENTS ARE APPROXIMATE ONLY AND SUBJECT TO FINAL SURVEY.
INFORMATION ACCURATE AT POINT OF PRINTING.
BP APPROVAL NO.: A1716-00010-2021-BP01 DATED 24/03/2023



Type C9

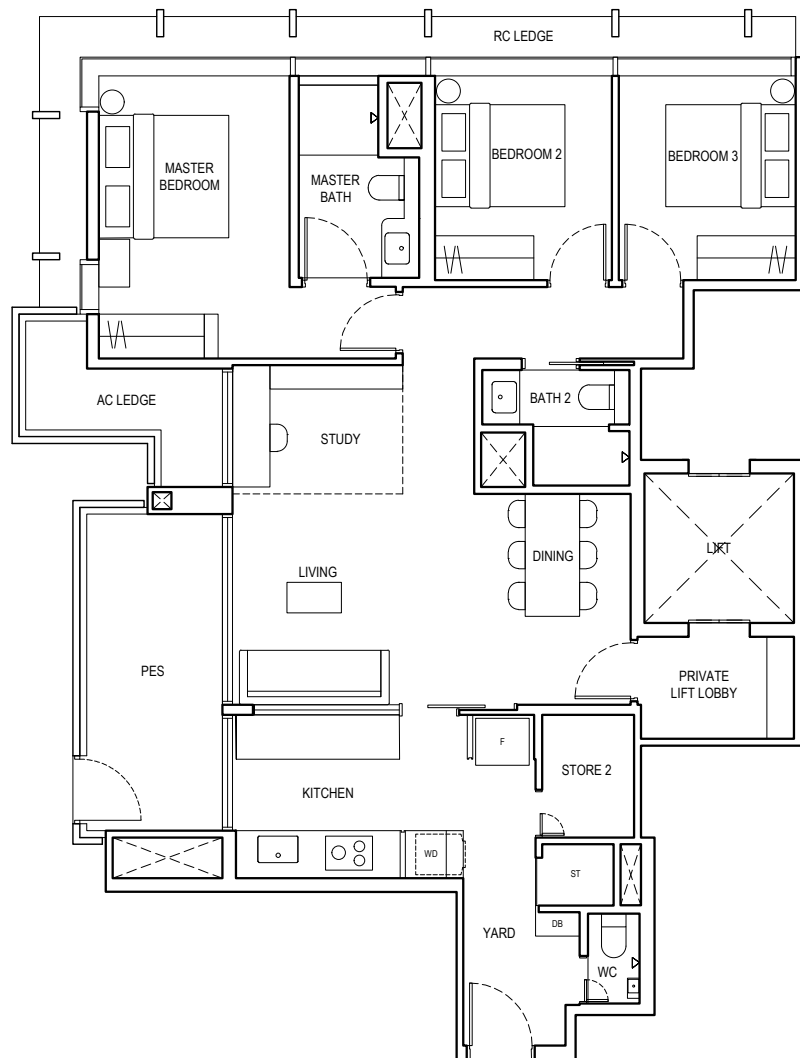
3 BEDROOM + STUDY

Type C9-G

116 m² / 1249 ft²

Inclusive of 11 m² PES &
6 m² AC Ledge

BLOCK 2 #01-26
BLOCK 5 #01-20

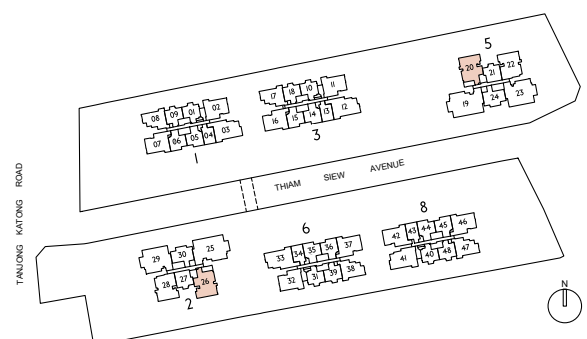


LEGEND

PES	PRIVATE ENCLOSED SPACE	ST	STORE 1
DB	DISTRIBUTION BOARD	WC	WATER CLOSET
F	FRIDGE	RC	REINFORCED CONCRETE (EXCLUDED FROM STRATA AREA)
WD	WASHER DRYER COMBO		VOID SPACE (EXCLUDED FROM STRATA AREA)
AC	AIR-CONDITIONER		



ALL PLANS ARE SUBJECT TO CHANGES BY THE RELEVANT AUTHORITIES.
MEASUREMENTS ARE APPROXIMATE ONLY AND SUBJECT TO FINAL SURVEY.
INFORMATION ACCURATE AT POINT OF PRINTING.
BP APPROVAL NO.: A1716-00010-2021-BP01 DATED 24/03/2023



Type C9

3 BEDROOM + STUDY

Type C9

116 m² / 1249 ft²

Inclusive of 11 m² Balcony & 6 m² AC Ledge

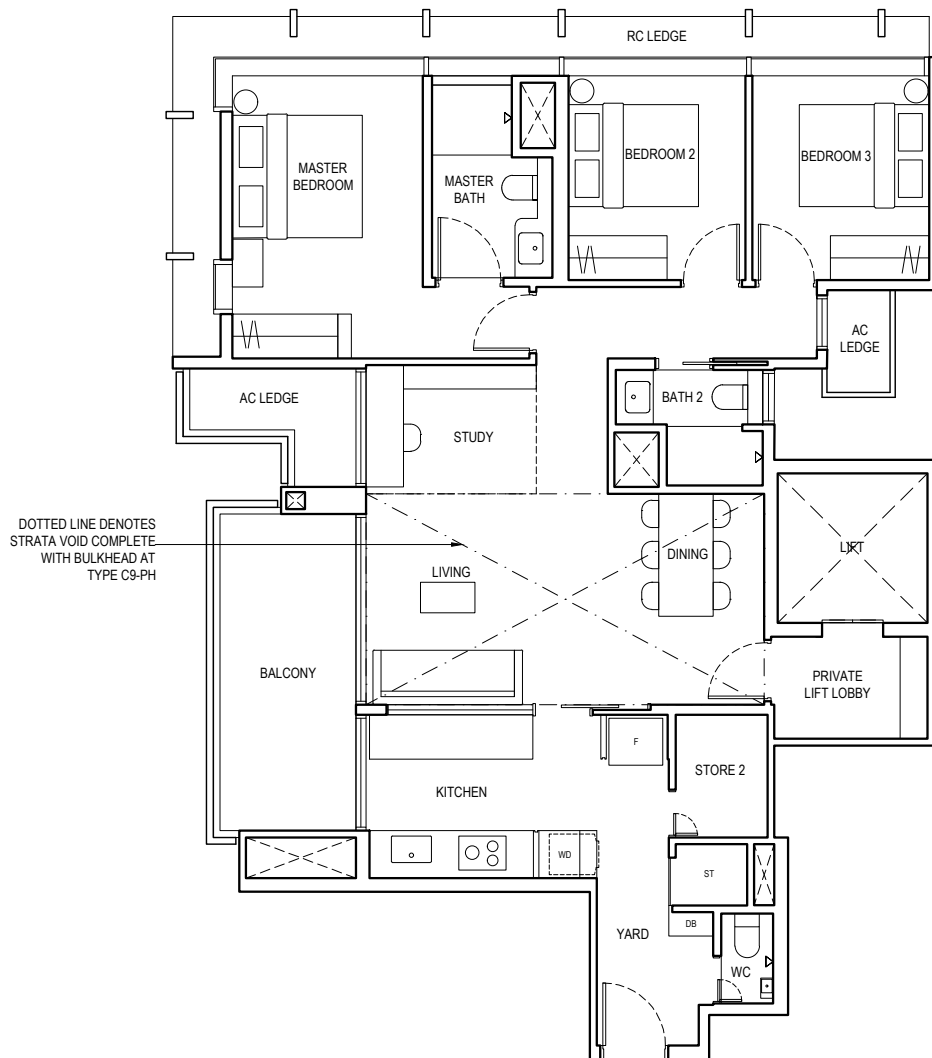
BLOCK 2 #02-26 to #17-26
BLOCK 5 #02-20 to #17-20

Type C9-PH

136 m² / 1464 ft²

Inclusive of 20 m² Strata Void, 11 m² Balcony & 6 m² AC Ledge

BLOCK 2 #18-26
BLOCK 5 #18-20

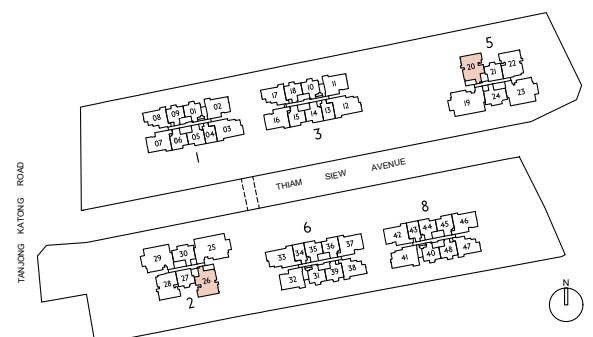


LEGEND

PES	PRIVATE ENCLOSED SPACE	ST	STORE 1
DB	DISTRIBUTION BOARD	WC	WATER CLOSET
F	FRIDGE	RC	REINFORCED CONCRETE (EXCLUDED FROM STRATA AREA)
WD	WASHER DRYER COMBO		VOID SPACE (EXCLUDED FROM STRATA AREA)
AC	AIR-CONDITIONER		



ALL PLANS ARE SUBJECT TO CHANGES BY THE RELEVANT AUTHORITIES.
MEASUREMENTS ARE APPROXIMATE ONLY AND SUBJECT TO FINAL SURVEY.
INFORMATION ACCURATE AT POINT OF PRINTING.
BP APPROVAL NO.: A1716-00010-2021-BP01 DATED 24/03/2023



Type D1

4 BEDROOM

Type D1-G

114 m² / 1227 ft²

Inclusive of 5 m² PES & 7 m² AC Ledge

BLOCK 8 #01-41

Type D1

114 m² / 1227 ft²

Inclusive of 5 m² Balcony & 7 m² AC Ledge

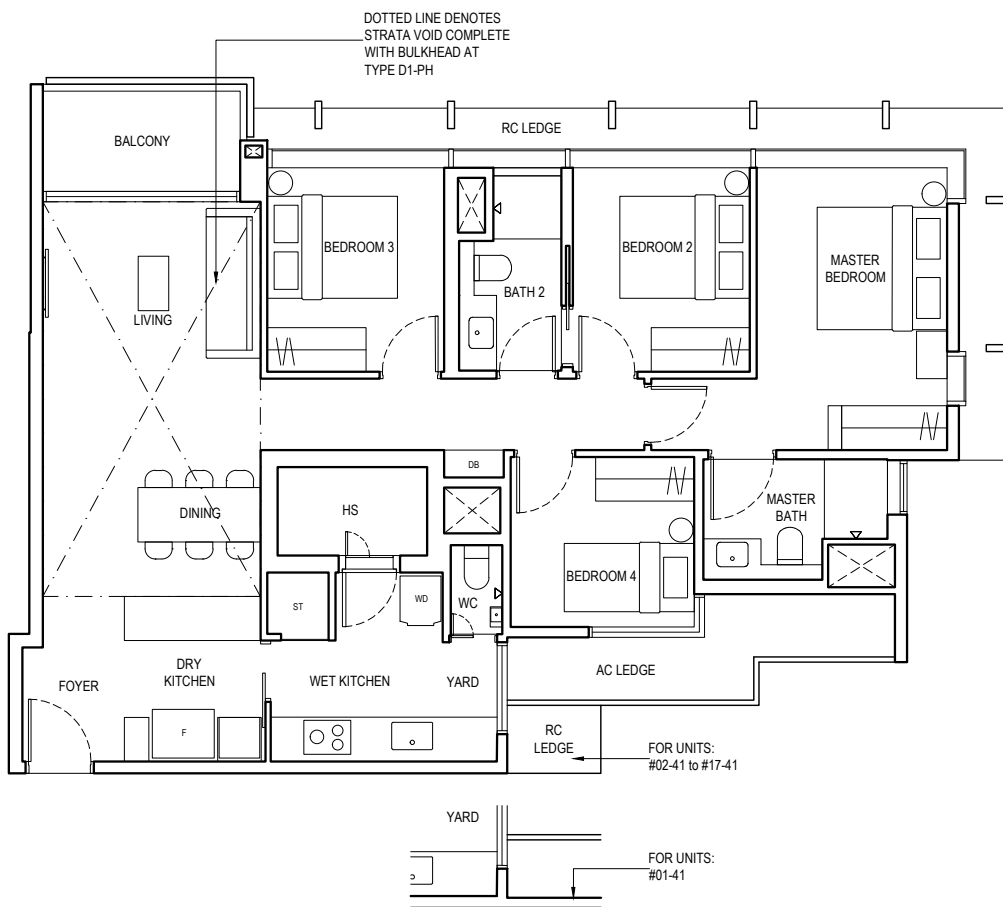
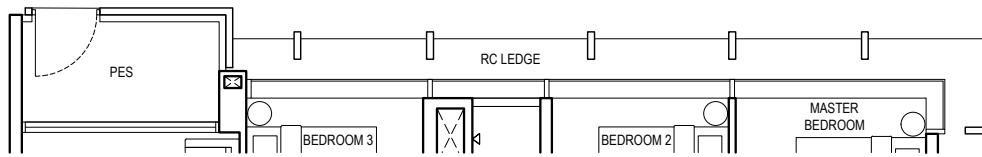
BLOCK 8 #02-41 to #16-41

Type D1-PH

135 m² / 1453 ft²

Inclusive of 21 m² Strata Void, 5 m² Balcony & 7 m² AC Ledge

BLOCK 8 #17-41

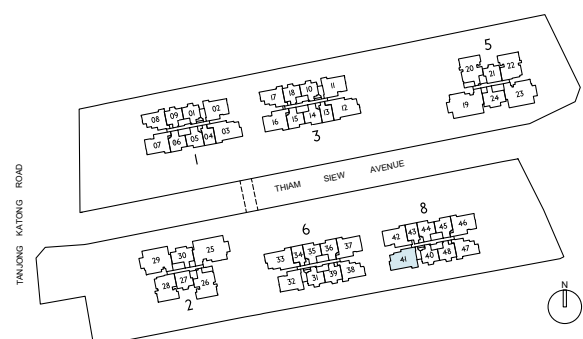


LEGEND

PES	PRIVATE ENCLOSED SPACE	ST	STORE
DB	DISTRIBUTION BOARD	HS	HOUSEHOLD SHELTER
F	FRIDGE	WC	WATER CLOSET
WD	WASHER DRYER COMBO	RC	REINFORCED CONCRETE (EXCLUDED FROM STRATA AREA)
AC	AIR-CONDITIONER		VOID SPACE (EXCLUDED FROM STRATA AREA)



ALL PLANS ARE SUBJECT TO CHANGES BY THE RELEVANT AUTHORITIES.
MEASUREMENTS ARE APPROXIMATE ONLY AND SUBJECT TO FINAL SURVEY.
INFORMATION ACCURATE AT POINT OF PRINTING.
BP APPROVAL NO.: A1716-00010-2021-BP01 DATED 24/03/2023



Type D2

4 BEDROOM

Type D2-G

118 m² / 1270 ft²

Inclusive of 5 m² PES & 7 m² AC Ledge

BLOCK 3 #01-12
BLOCK 6 #01-33

Type D2

118 m² / 1270 ft²

Inclusive of 5 m² Balcony & 7 m² AC Ledge

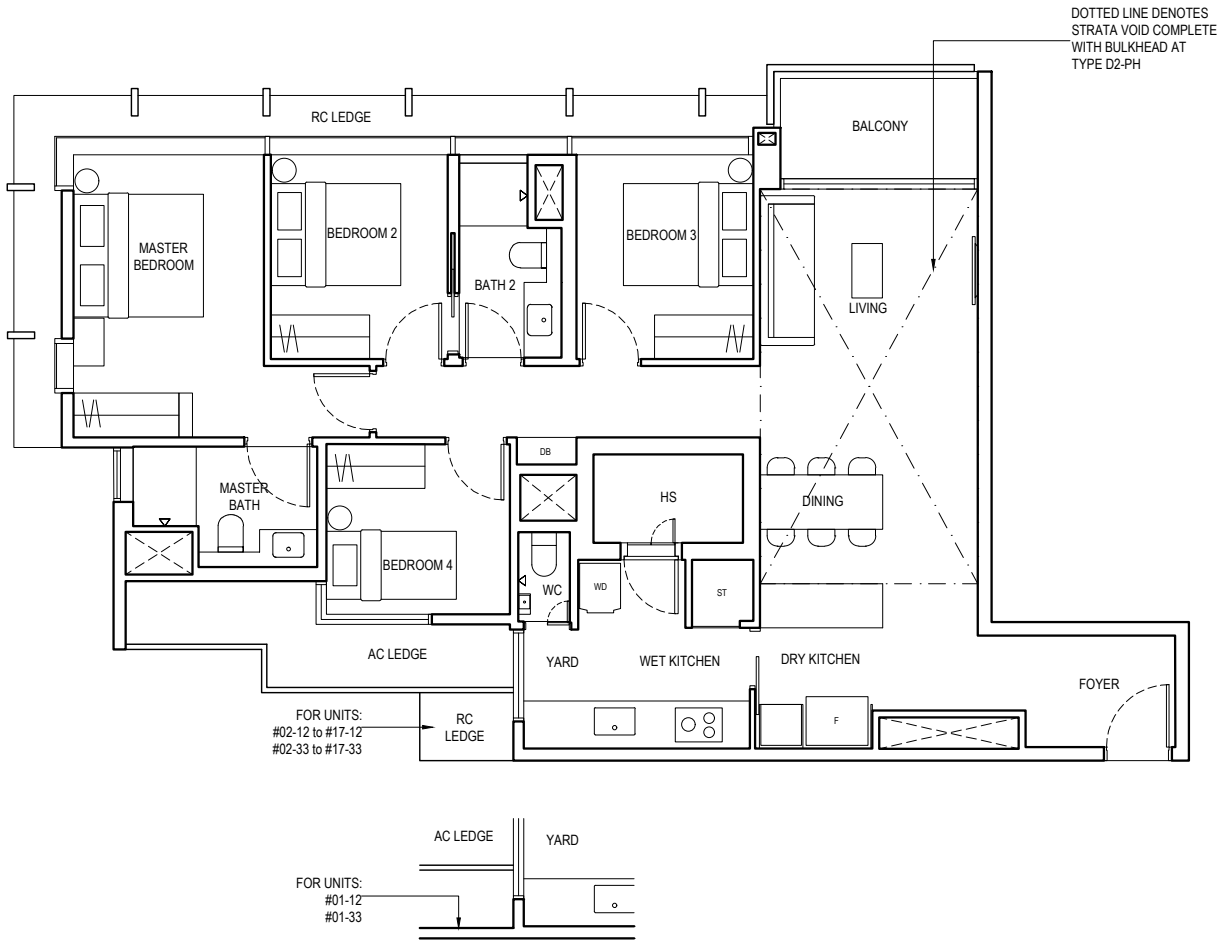
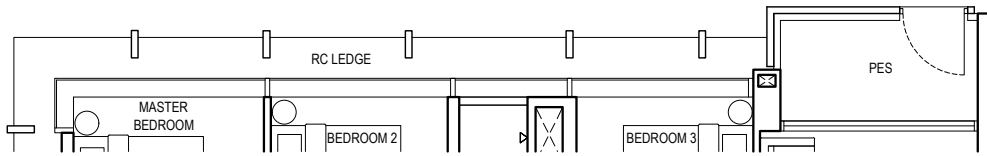
BLOCK 3 #02-12 to #16-12
BLOCK 6 #02-33 to #16-33

Type D2-PH

139 m² / 1496 ft²

Inclusive of 21 m² Strata Void, 5 m² Balcony & 7 m² AC Ledge

BLOCK 3 #17-12
BLOCK 6 #17-33

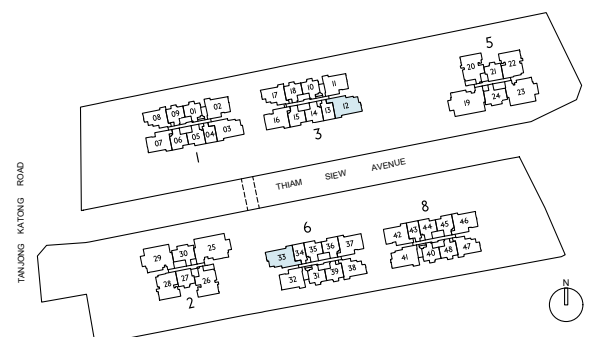


LEGEND

PES	PRIVATE ENCLOSED SPACE	ST	STORE I
DB	DISTRIBUTION BOARD	HS	HOUSEHOLD SHELTER
F	FRIDGE	WC	WATER CLOSET
WD	WASHER DRYER COMBO	RC	REINFORCED CONCRETE (EXCLUDED FROM STRATA AREA)
AC	AIR-CONDITIONER		VOID SPACE (EXCLUDED FROM STRATA AREA)



ALL PLANS ARE SUBJECT TO CHANGES BY THE RELEVANT AUTHORITIES. MEASUREMENTS ARE APPROXIMATE ONLY AND SUBJECT TO FINAL SURVEY. INFORMATION ACCURATE AT POINT OF PRINTING. BP APPROVAL NO.: A1716-00010-2021-BP01 DATED 24/03/2023



Type D3

4 BEDROOM

Type D3-G

120 m² / 1292 ft²

Inclusive of 5 m² PES & 8 m² AC Ledge

BLOCK I #01-03

Type D3

120 m² / 1292 ft²

Inclusive of 5 m² Balcony & 8 m² AC Ledge

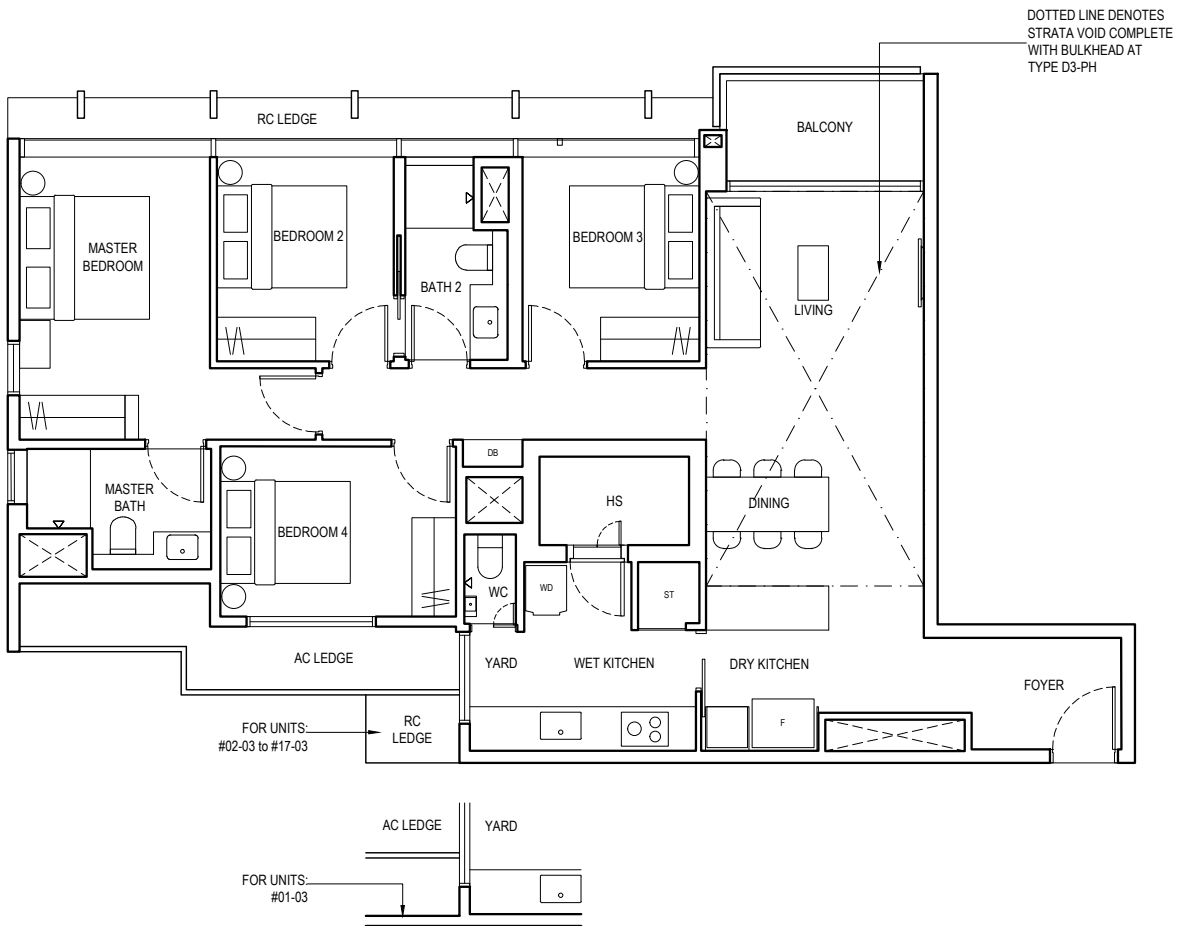
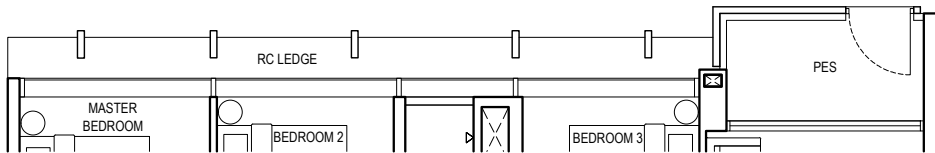
BLOCK I #02-03 to #16-03

Type D3-PH

141 m² / 1518 ft²

Inclusive of 21 m² Strata Void, 5 m² Balcony & 8 m² AC Ledge

BLOCK I #17-03

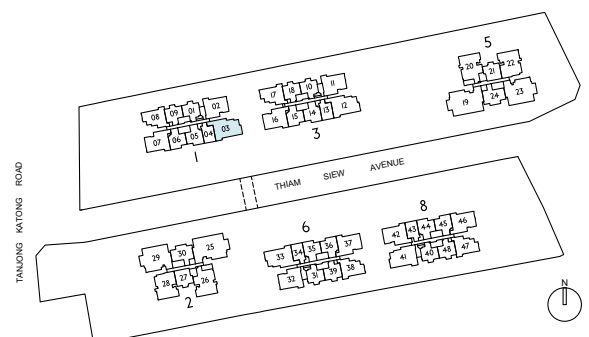


LEGEND

PES	PRIVATE ENCLOSED SPACE	ST	STORE
DB	DISTRIBUTION BOARD	HS	HOUSEHOLD SHELTER
F	FRIDGE	WC	WATER CLOSET
WD	WASHER DRYER COMBO	RC	REINFORCED CONCRETE (EXCLUDED FROM STRATA AREA)
AC	AIR-CONDITIONER	☐	VOID SPACE (EXCLUDED FROM STRATA AREA)

0 1 2 3 4 5M

ALL PLANS ARE SUBJECT TO CHANGES BY THE RELEVANT AUTHORITIES. MEASUREMENTS ARE APPROXIMATE ONLY AND SUBJECT TO FINAL SURVEY. INFORMATION ACCURATE AT POINT OF PRINTING. BP APPROVAL NO.: A1716-00010-2021-BP01 DATED 24/03/2023



Type D4

4 BEDROOM PREMIER

Type D4

157 m² / 1690 ft²

Inclusive of 11 m² Balcony & 7 m² AC Ledge

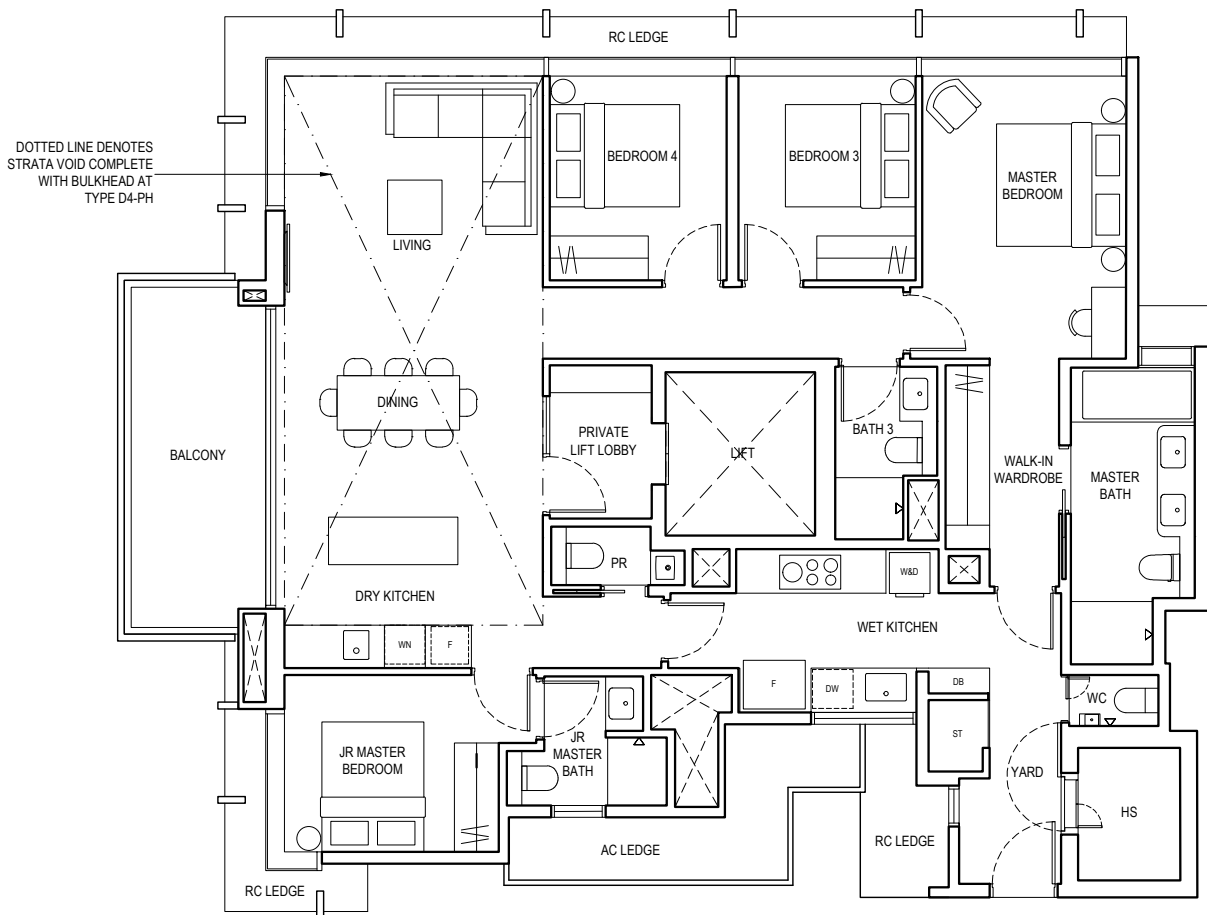
BLOCK 2 #03-29 to #17-29
BLOCK 5 #03-23 to #17-23

Type D4-PH

189 m² / 2034 ft²

Inclusive of 32 m² Strata Void, 11 m² Balcony & 7 m² AC Ledge

BLOCK 2 #18-29
BLOCK 5 #18-23

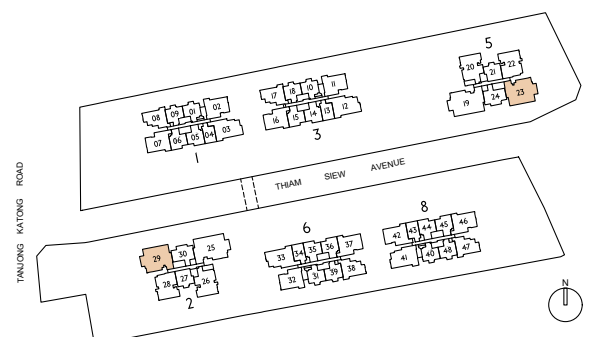


LEGEND

DB	DISTRIBUTION BOARD	PR	POWDER ROOM
F	FRIDGE	DW	DISHWASHER
W	WASHER	WN	WINE CHILLER
D	DRYER	WC	WATER CLOSET
HS	HOUSEHOLD SHELTER	RC	REINFORCED CONCRETE (EXCLUDED FROM STRATA AREA)
AC	AIR-CONDITIONER	□	VOID SPACE (EXCLUDED FROM STRATA AREA)
ST	STORE I		



ALL PLANS ARE SUBJECT TO CHANGES BY THE RELEVANT AUTHORITIES. MEASUREMENTS ARE APPROXIMATE ONLY AND SUBJECT TO FINAL SURVEY. INFORMATION ACCURATE AT POINT OF PRINTING. BP APPROVAL NO.: A1716-00010-2021-BP01 DATED 24/03/2023



Type E

5 BEDROOM

Type E

177 m² / 1905 ft²

Inclusive of 11 m² Balcony & 9 m² AC Ledge

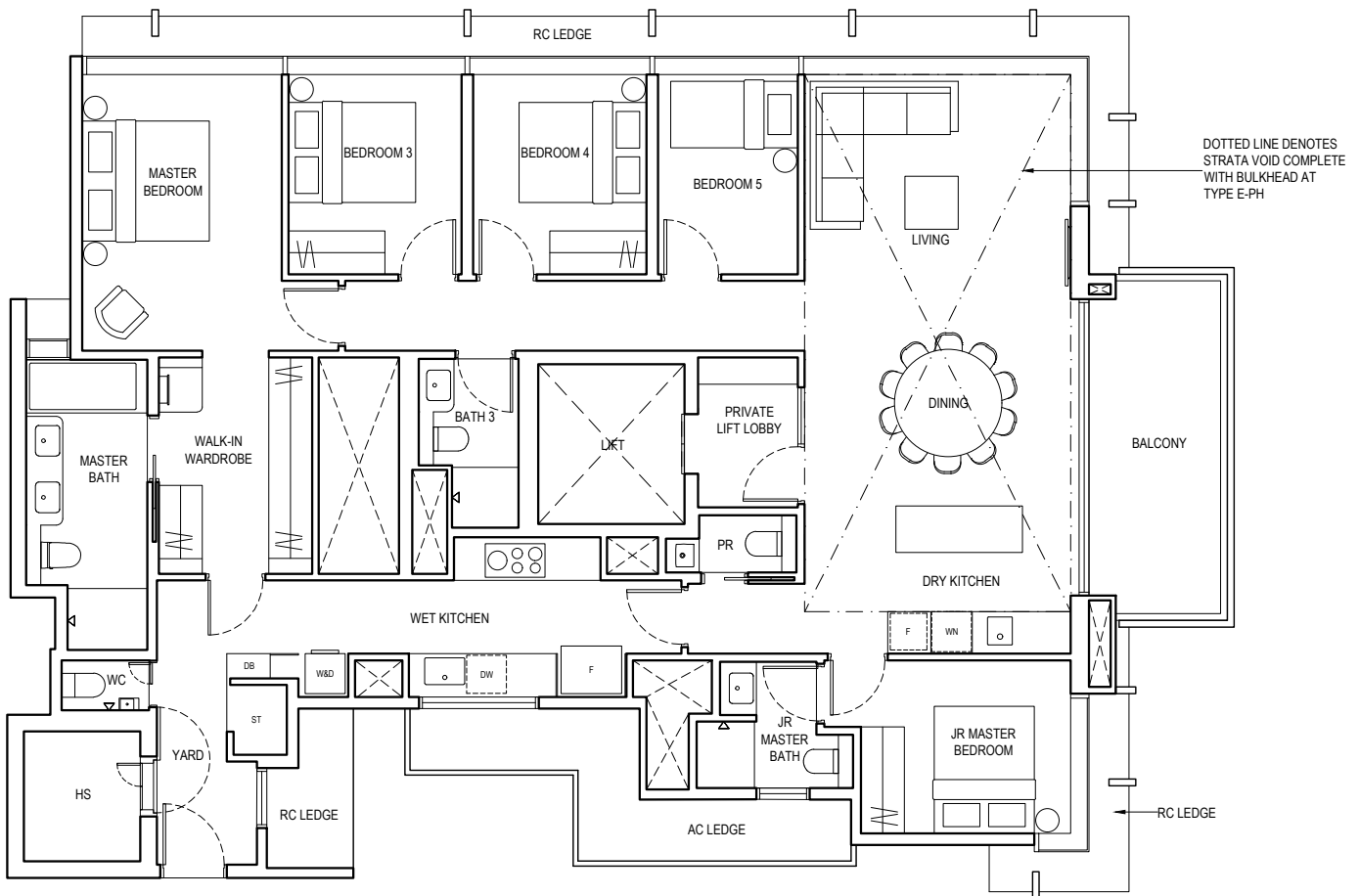
BLOCK 2 #03-25 to #17-25
BLOCK 5 #03-19 to #17-19

Type E-PH

210 m² / 2260 ft²

Inclusive of 33 m² Strata Void, 11 m² Balcony & 9 m² AC Ledge

BLOCK 2 #18-25
BLOCK 5 #18-19

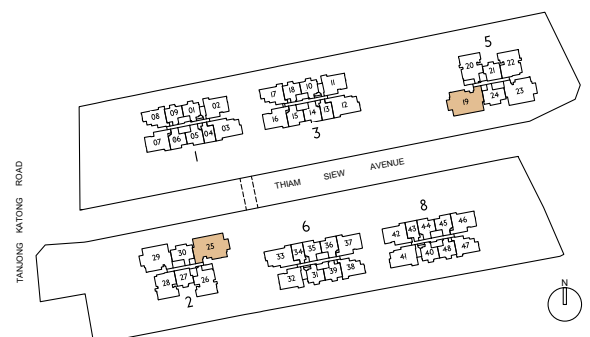


LEGEND

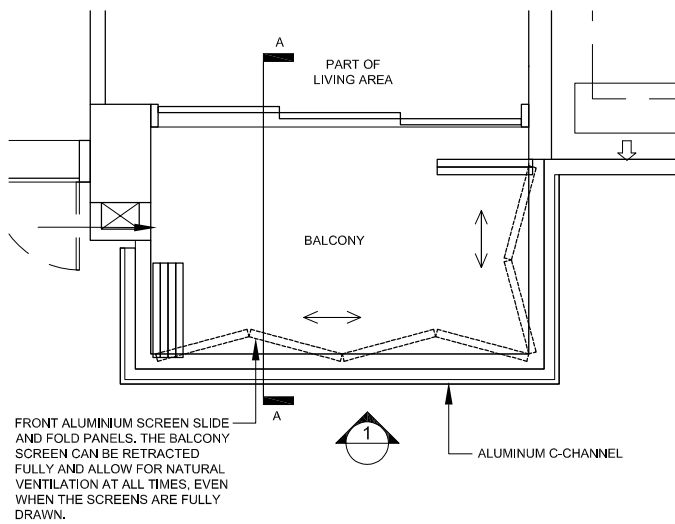
DB	DISTRIBUTION BOARD	PR	POWDER ROOM
F	FRIDGE	DW	DISHWASHER
W	WASHER	WN	WINE CHILLER
D	DRYER	WC	WATER CLOSET
HS	HOUSEHOLD SHELTER	RC	REINFORCED CONCRETE (EXCLUDED FROM STRATA AREA)
AC	AIR-CONDITIONER		VOID SPACE (EXCLUDED FROM STRATA AREA)
ST	STORE		



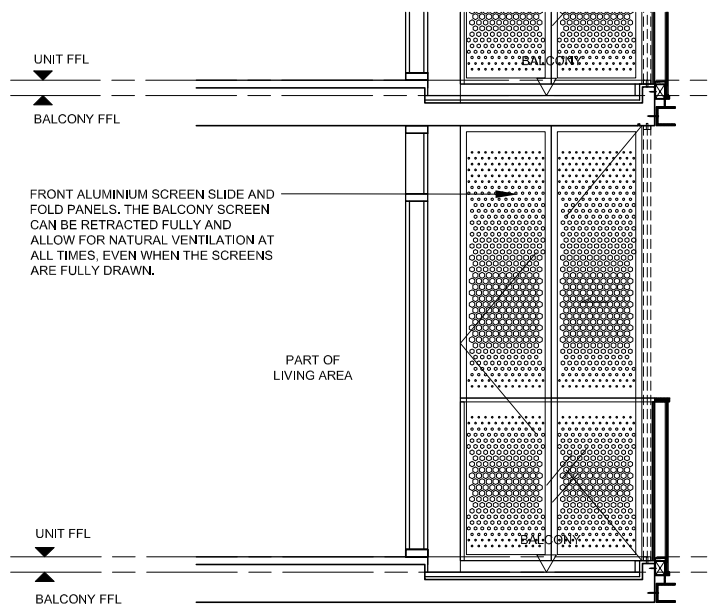
ALL PLANS ARE SUBJECT TO CHANGES BY THE RELEVANT AUTHORITIES.
MEASUREMENTS ARE APPROXIMATE ONLY AND SUBJECT TO FINAL SURVEY.
INFORMATION ACCURATE AT POINT OF PRINTING.
BP APPROVAL NO.: A1716-00010-2021-BP01 DATED 24/03/2023



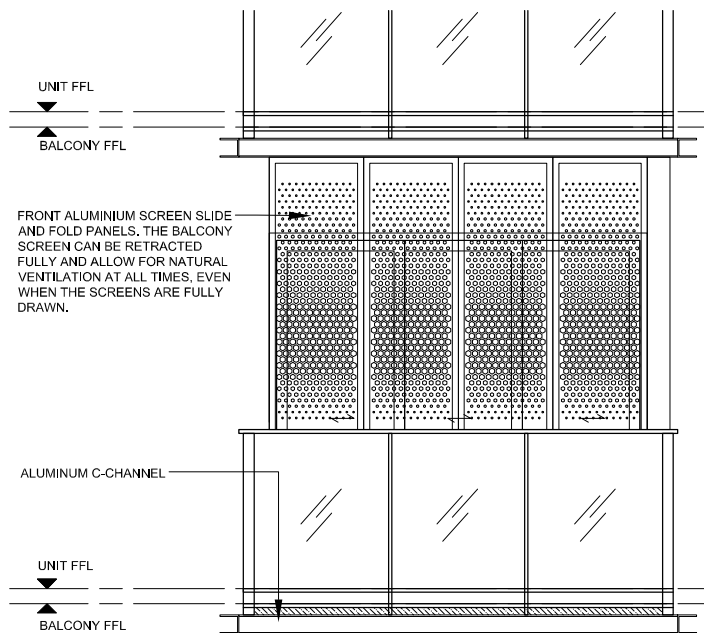
Approved Balcony Chart



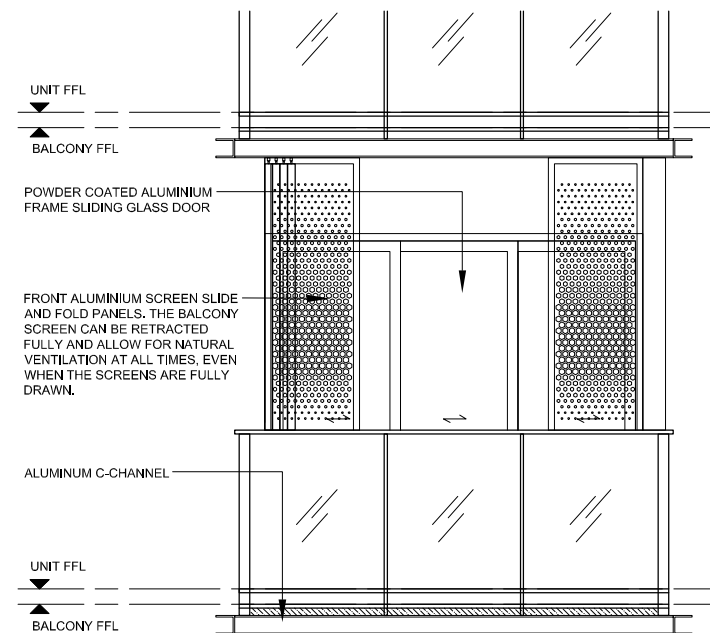
TYPICAL RETRACTABLE BALCONY SCREEN PLAN



TYPICAL RETRACTABLE BALCONY SCREEN SECTION



TYPICAL RETRACTABLE BALCONY SCREEN ELEVATION (*FULLY DRAWN)



TYPICAL RETRACTABLE BALCONY SCREEN ELEVATION (*FULLY RETRACTED)

NOTE

1. Aluminium louver sliding folding screen is not provided for this development (unless otherwise stated).
2. The balcony shall not be enclosed unless the screen is approved by the relevant authorities.
3. Final selection of material, colour and detailing of the screen is subject to MCST & relevant authorities approval.
4. Approval from MCST is required before installation.
5. Owner to engage the developer's appointed contractor and/or their own contractor to install the screen.
6. All installation fees to be borne by the owner.
7. Measurements are approximate only and subject to final survey.



About The Developers

Hoi Hup Sunway is an award winning collaboration between Hoi Hup Realty and Sunway Developments. Bringing together the expertise and experience of two real estate leaders, this winning combination has inspired many successful projects. One of their projects Sophia Hills has been honoured with Gold at the FIABCI World Prix d'Excellence Awards 2020 (Mid-rise Residential), EdgeProp Singapore Excellence Awards 2020 for Top Development (Residential, Central, Completed), and FIABCI-Singapore Proper Awards 2019 (Mid-rise Residential and Heritage).

The conglomerate's project Ki Residences at Brookvale has also been awarded PropertyGuru Asia Property Awards, Winner of Best Private Condo Interior Design (Singapore) and Highly Commended Best Private Condo Interior Design (Singapore) and Best Private Condo Landscape Architectural Design (Singapore), EdgeProp Singapore Excellence Award Design Excellence and Sustainability Excellence.

Its current projects include Terra Hill, Ki Residences at Brookvale and Parc Central Residences.



Hoi Hup Realty

An established property developer in Singapore, Hoi Hup Realty Pte Ltd is committed to creating living spaces of the highest quality, comfort, functionality, and style. It has been recognised with numerous accolades including the BCI Asia Top Ten Developers Award from 2017 to 2021, BCA Quality Excellence Award – Quality Champion (Platinum) in 2018 and 2019, and the EdgeProp Singapore Excellence Award 2021 Top Developer.

WWW.HOIHUP.COM

Sunway Developments

Sunway Developments Pte Ltd is a component of Sunway Property, which is the property division of Sunway Group, one of Southeast Asia's leading conglomerates. As a Master Community Developer, Sunway Property has an established track record in managing and developing innovative and quality residential and non-residential properties in the region, including retail, leisure, healthcare, hospitality, as well as other commercial assets.

WWW.SUNWAY.COM.MY



THE CONTINUUM

A Luxury Development By



Developer: Hoi Hup Sunway Katong Pte. Ltd. (UEN: 202140399C) Developer Licence No. CI46I Tenure of Land: Estate in Fee Simple for Lots 3220W, 322IV, 3222P, 3223T, 3224A, 3225K, 3226N, 3227X, 3228L, 3229C, 3230X, 4366X, 3234W, 3235V, 3236P, 3237T, 3238A, 3239K, 3240T, 3241A, 3242K, 3243N and 4364K all of MK 25; and Remainder of Leasehold estate of 99 years commencing on 2 March 2023 (for proposed overhead bridge (airspace) for Lot 6115N-PT (now known as 70002W) of MK 25 Notice of Vacant Possession: 17 November 2027 Notice of Completion: 17 November 2030 BP Approval No. A1716-00010-2021-BP01 dated 24 March 2023 Encumbrance on the Land: Mortgage in favour of OCBC Bank

All reasonable care has been taken in preparing this brochure and in constructing the models and sales gallery/showflats and all statements are believed to be correct but are not to be regarded as statements or representations of fact. All information and specifications are current at the time of going to press and are subject to such changes as may be required by the Developer. All plans and models are not to scale unless expressly stated and are subject to any amendments which are required or approved by the relevant authorities. Renderings and illustrations are artist's impressions only and photographs are only decor suggestions and cannot be regarded as representations of fact. All areas and other measurements are subject to final survey. The Option to Purchase embodies all the terms and conditions between the Developer and the Purchaser and supersedes and cancels in all respects all previous representations, warranties, promises, inducements or statements of intention, whether written or oral made by the Developer and/or the Developer's agent which are not embodied in the Option to Purchase.

